

# The

**Bluefaced Leicester Sheep  
Breeders' Association**

# Autumn Review

2014 - Edition No. 33






Levi and Dante Cousin

Have Females for sale in January at Hawes from their

# Gillcumber

Flock 4471



Stock tup  
Llanilltyd F1

Wishing you all a good Winter and a great lambing!  
I R Cousin - Gillcumber Edge, Winton, Kirkby Stephen,  
Cumbria CA17 4HU Tel: 07966 462756

# HAWES

## Auction Mart

HAWES, NORTH YORKSHIRE, DL8 3NP

Tel: 01969 667207 Fax: 01969 667220

### Saturday January 17th 2015

Prize Show & Sale of Registered  
Bluefaced Leicester Females for the  
Bluefaced Leicester Sheep Breeders' Association.

**Judging 10.00 am. Sale 11.30 am.**

**Entries close 30th December 2014.**

Special Prize Show & Sale of Individual Crowned  
Swaledale Ewes, Gimmer Shearlings and Gimmer Lambs  
for the Swaledale Sheep Breeders' Association.

**Judging 10.15 am.**

For further information contact Auctioneers:

Raymond Lund 015396 20895 or 07974 126397

Maurice Scott: 01833 622240

[www.hawesmart.co.uk](http://www.hawesmart.co.uk)

Email: [office@hawesmart.co.uk](mailto:office@hawesmart.co.uk)

## Ensure your livestock is covered...

Don't risk it - chat to our  
**in-Livestock** team to request a  
quotation, either **before** or **during**  
the next pedigree ram sale.

## in-Livestock

Specialists in Livestock Insurance



### CAN YOU REALLY AFFORD TO TAKE THE RISK AND NOT INSURE?



Contact Carol on  
M. 07703 672337

T. 01228 406290 | E. [info@in-Livestock.co.uk](mailto:info@in-Livestock.co.uk) | W. [in-Livestock.co.uk](http://in-Livestock.co.uk)

**H&H** INSURANCE BROKERS  
Rural & Commercial Insurance

Borderway, Rosehill, Carlisle, Cumbria CA1 2RS  
**hhinsurancebrokers.co.uk**

in-Livestock is a trading name of H&H Insurance Brokers Limited, which is authorised and regulated by the FCA



[www.blueleicester.co.uk](http://www.blueleicester.co.uk)



# Welcome

To the 2014 edition of the  
Autumn Review Magazine

## Editorial

Office News.....	4-5
2014 Progeny Show Results .....	6-13
Performance Recording article.....	14-15
50th Anniversary Youth Scholarship Winner...	16
Ballinrobe Sale Report .....	18
Mules Produced From Rough Fell Ewes .....	20
Regional News .....	22-24
2014 Show Champions .....	25
£1,000 Sale List .....	28-43

## Advertising

Campbell A.....	BC
Cousin I R.....	IFC
Davies P .....	21
Harrison & Hetherington Auction Mart.....	10
Harrison & Hetherington Insurance Brokers ..	IFC
Hawes Auction Mart .....	IFC
Lord M/s .....	19
Marston N .....	BC
Owen E .....	21
Rough Fells .....	20
Seed M .....	15
Thomas R.....	9
Wight J & Sons.....	17
Williams G P & Co .....	11



Front Cover - 2014 Progeny Show Bluefaced Leicester Group Champions from - Co Antrim, Penrith, Perth and Welshpool. Photos taken by J Eveson, W Hutchinson and R Stephen.

## Chairman's Message

### Congratulations to all members on their 2014 achievements

Mother nature has certainly played her part in our calendar again this year from the torrential rain and horrendous flooding suffered down in the south of England at the start of the year through to the Indian Summer we are currently experiencing – as I write this report it is a balmy 16c and there are only five days left until it is November.



Carl Stephenson

In May we held our 51st Annual General Meeting. This year David Raine was re-elected as a Trustee. South West Chairman and long standing member of the Association Brian Dallyn was appointed as our President. Past Chairman Phil Davies was appointed as President elect. I would like to take this opportunity to thank all the Trustees and members of the Association council for their help and support they have given to me throughout this year.

The Association show stand has travelled far and wide across the UK in 2014 attending numerous NSA one day events, The Balmoral Show in Northern Ireland, The Royal Highland Show, The Great Yorkshire Show and The Royal Welsh Show and our last event of the year Agri Expo at Carlisle. I would like to thank everyone involved with the show stands at all of these events and for supplying some wonderful examples of the breed and their progeny.

There were four successful progeny shows held this year in Perth, Penrith, Antrim and Welshpool. Congratulations go to all our show champions this year and special mention to all members who consistently turn out sheep to such high standards at all our shows and events.

Our ram sales began at Kelso in early September, some of the sales saw an increase in numbers at some centres, whilst others maintained similar numbers to 2013. The top price for shearling rams was shared again this year with two selling at £7000, this was achieved by John & Mandy Smith-Jackson, SHAFTHILL who sold F9 at Hawes, and from M/s Lord, HEWGILL who sold F51 at Penrith. The top price realised for a ram lamb in 2014 was for G33 from M/s J Wight & Sons, MIDLOCK and he was sold for £15,000 at Hawes.

I would like to extend my sincere thanks to Helen and Rachael in the office who have both worked extremely hard over this past year to make my job as Chairman a lot easier.

My last job for this year is to wish you all a Very Merry Christmas and a Prosperous & Happy New Year.

**Association Contacts - Chairman** - Carl Stephenson, Pikestone, Bishop Auckland Tel: 01833 631318  
**Bluefaced Leicester Sheep Breeders' Association Secretary** - Helen Carr-Smith  
Riverside View, Warwick Road, Carlisle CA1 2BS Tel: 01228 598022 / Fax: 01228 598021  
Email: info@blueleicester.co.uk Charity Number: 252714

[www.blueleicester.co.uk](http://www.blueleicester.co.uk)







**From Helen Carr-Smith,  
Association Secretary**

# News From The Office



**The Assoc. was awarded joint third prize in the best stand competition at the NSA Sheep Event in Malvern**

## 2015 Subscriptions

Payment of subscriptions is due on the 1st January 2015. If you do not pay your annual subscription to the Association by standing order, and would like to set one up so your subscription is never late, please contact the office for an application form. Remember non paid up members are automatically excluded from our mailing list.

## Registration Forms

If you have not already returned your completed registration form to the office, then please do so by 31st December to make sure your pedigrees are in the Flock Book. If you have lost your original copy of your form and require another copy then please contact the office.

## NSA Events 2014

The Association has travelled far and wide to attend various shows and events again this year. There were two NSA events this year - Scot Sheep in Berwickshire and NSA Malvern. Scot Sheep was

held on one of the wettest days of the year, and I would like to extend my thanks to everyone who helped with this event in the most testing of conditions to make the stand look as good as it did despite the rain.

NSA Malvern was held in the total opposite conditions of soaring temperatures, and not a raindrop in sight. Thank you to everyone who helped source sheep for these specialist events again this year.

## Shows 2014

The Association were in attendance with their display stands at Balmoral Show in Northern Ireland, The Royal Highland Show, The Great Yorkshire Show and The Royal Welsh Show.

All these shows provided excellent classes of Bluefaced Leicesters and many congratulations to all winners and champions, and to all exhibitors for turning out their sheep to such a high standard. Agri Expo was our final event of the year held at Borderway Mart, Carlisle.



**Balmoral Show First Prize Winners pictured with Judge - Richard Hutchinson and Helen Carr-Smith**





**Presentation of the Arthur Yeats Chief Steward Anniversary Challenge Trophy at Builth Wells. This year's winner was G P Williams, Elian flock. Pictured - John Stott presenting Dewi Williams with the trophy.**

## Sales 2014

The sales got off to a wet and rainy start this year with the female sales in January at Hawes and Carlisle. Despite the weather there was a good turn out of both sheep and buyers and both centres achieved healthy averages. Top price at the Hawes sale was a gimmer hogg from I & P Brown, Oak House selling at £4400. Top price at Carlisle was a one crop ewe from M/s Booth, Smearsett selling at 9500 gns. Some of the ram sales saw a slight increase in numbers at some centres, whilst others maintained similar numbers to 2013. The top price for shearling rams was shared again this year with two selling at £7000, this was achieved by John and Mandy Smith-Jackson, SHAFTHILL who sold F9 at Hawes and M/s Lord, HEWGILL who sold F51 at Penrith. The top price realised for a ram lamb in 2014 was for G33 from M/s J Wight & Sons, MIDLOCK, and he was sold for £15,000 at the Hawes Sale. I would like to thank all members who returned sale entry forms in good time for catalogue preparation again this year.

## Ear Tags

If you need to order replacement ear tags from the Association for your Bluefaced Leicesters, please remember we require the following details: Bluefaced Leicester side of the tag details; UK flock number with individual number; your CPH number. If it is a bought in animal and not your own breeding, we require proof of purchase – either by supplying the tag you need replacing or an Auctioneers invoice (this will be returned to you once the order is placed). If all of this information can be supplied at the time of ordering then it will allow us to improve the service for members.

## Grassroots Online Database

Members have free access to the database system Grassroots. This can be found through a link on the website [www.blueleicester.co.uk](http://www.blueleicester.co.uk). Here members can check their flock details, and by using their personal password they can 'manage' their flock on-line by deleting dead animals and notifying the database of transfers off your own holding. Any additional stock you have purchased has to be notified to the office to be added to your flock records. Personal details can also be amended. Animal details cannot be amended – the office will have to be notified of any changes required. If you have forgotten your password, please contact the office and we will be happy to send you a reminder.

## E-mail Register

An e-mail register is to be created for any member who wishes to receive relevant information from Association Council Meetings and National Annual General Meetings. The details provided in the e-mail will be regarding decisions made from these meetings, and the e-mails will be sent to members once the minutes are approved. If you wish to join the list, then please forward an e-mail to the Association office at [info@blueleicester.co.uk](mailto:info@blueleicester.co.uk) with your name, flock number and prefix.

## Twitter

If you have not already signed up to follow the Association on Twitter, you can do so by visiting our website [www.blueleicester.co.uk](http://www.blueleicester.co.uk) and follow the links to Twitter and join in the conversation.

## Christmas and New Year Arrangements

The office will close at 1pm Thursday 18th December, 2014 and will re-open Monday 5th January, 2015. Rachael and I would like to wish you all a Very Merry Christmas and a Prosperous and Happy New Year.



**Winner of the Kerr Memorial Cup for the best pen of shearlings at Ballymena Sale - T Wray, Knockstaken**





**Champion  
Progeny Group -  
S A Thomason**



# Penrith Progeny Show

Photos by John Eveson

Another great show of Bluefaced Leicesters and Mules at Penrith again this year, and the man with the task of judging the biggest show of Blues for many years was Elfyn Owen, Cernyw Flock, North Wales. Having a tremendous day was Scott Thomason, Piel View Flock, Barrow-in-Furness, taking the individual Championship with a shearling gimmer by Hazelwood Z1 and out of a ewe sired by Middle Dukesfield W6 and Reserve Champion with a ram lamb by Kildalloig F17 and out of a ewe by Barlaes T3. He also went on to win the progeny show with three powerful gimmer shearlings by Hazelwood Z1. Scott Thomason also took the Reserve Male with a Myfyrian ram bought at Carlisle in partnership with Mr Dixon, Alwinton Flock, Northumberland sired by Craig yr Orsedd D1.

John Stott, Laund Flock, Lancashire also had a good day winning the Reserve Female Champion ticket in the individual section with a ewe

by Mere oak B17 and also reserve in the progeny section with three sharp gimmer lambs by Tanhouse Farm E1.

## Bluefaced Leicester Open Class Results

**Breed Champion & Female Champion** - S Thomason

**Reserve Champion & Male Champion** - S Thomason

**Reserve Male Champion** - S Thomason

**Reserve Female Champion** - C M & J Stott

**Aged Ram** - 1-M James, 2-C M & J Stott, 3-O Scown

**Shearling ram** - 1-S Thomason, 2-M & N Gray, 3-M & N Gray

**Ram lamb** - 1-S Thomason, 2-F Kennedy, 3-C M & J Stott

**Ewe** - 1-C M & J Stott, 2-S Thomason, 3-S Thomason

**Shearling gimmer** - 1-S Thomason, 2-S Thomason, 3-S Crozier

**Ewe lamb** - 1-W C Porter & Son, 2-C M & J Stott, 3-S Thomason

**Best Skinned Sheep** - J W & A M Little

**Breed Champion**



**Res. Champion**







**Champion  
Mule  
Progeny Group -  
M James**

#### Progeny Results

**Champion Group** - S Thomason

**Reserve Group** - C M & J Stott

**Three ewes by the same sire** - 1-M & C Drummond, 2-B & J Watson

**Three gimmer shearlings by the same sire**

1-S Thomason, 2-W C Porter & Son, 3-M W & C M Ridley

**Three ram lambs by the same sire**

1-S Thomason, 2-M & N Gray, 3-O Scown

**Three ewe lambs by the same sire**

1-C M & J Stott, 2-S Thomason, 3-M & C Drummond

**Three recorded ram lambs by the same sire** - 1-S Crozier

**Young handlers**

1-James Harrison, 2-James Drummond, 3-Daniel Barrett

Prizes in the Mule section were again dominated by the bloodlines of the renowned crossing sire Hundith Z4. Champion in the individual section was R & F Wilson, Carrholme, Carlisle with a ewe purchased from Neil Marston, Highberries sired by Hundith Z4, and a Hundith Z4 sired ewe lamb from Neil Marston, Highberries flock, Cockermouth took the reserve ticket in the individual Mule section this year. In the Mule progeny classes the champion came from Michael James, Duhonw flock with three Welsh Mules with their sire, Old Hemley D7, who is by Tanhouse Farm C2 out of a ewe by Midlock Y1. These Mule lambs were to be sold at Welshpool. Reserve Mule group were three Swaledale type ewe lambs from J C & E Pedley & Son, Yorehouse, Lunds. The reserve group were sired by Midlock C16 bought at Carlisle in 2010 and the Mule lambs were to be sold at Hawes.

#### Mule Open Class Results

**Breed Champion & Res. Interbreed** - R & F Wilson

**Reserve Breed Champion** - N Marston

**Champion Pair** - R & F Wilson

**Two Mule ewes (Swaledale type)**

1-R & F Wilson, 2-C Hewitt, 3-P J & D E Elliot

**One Mule ewe (Swaledale type)**

1-R & F Wilson, 2-R & F Wilson, 3-C Hewitt

**Two Mule gimmer shearlings (Swaledale type)**

1-R & F Wilson, 2-P J & D E Elliot, 3-P H & D E Elliot

**One Mule gimmer shearling (Swaledale type)**

1-R & F Wilson, 2-R & F Wilson, 3-R & F Wilson

**Two Mule ewe lambs (Swaledale type)**

1-N Marston, 2-W Hutchinson, 3-N Marston

**One Mule ewe lamb (Swaledale type)**

1-N Marston, 2-N Marston, 3-N Marston

**Two Mule ewe lambs (Blackfaced type)**

1-M Archer, 2-M W & C M Ridley, 3-M Archer

**One Mule ewe lamb (Blackfaced type)**

1-M Archer, 2-M Archer, 3-M Archer

**Two Mule ewe lambs (Any other type)**

1-D J Abberley, 2-M James, 3-D J Abberley

**One Mule ewe lamb (Any other type)**

1-M James, 2-D J Abberley, 3-D J Abberley

**Swaledale Ewe with her own twin gimmer lambs**

1-W C Porter & Son, 2-J W Smith-Jackson, 3-J C Walker & Son

#### Progeny Results

**Champion Group** - M James

**Reserve Group** - J C & E Pedley & Son

**Three Mule ewe lambs with their sire (Swaledale type)**

1-J C & E Pedley & Son, 2-J W Smith-Jackson, 3-M Allan

**Three Mule ewe lambs with their sire (Any other type)**

1-M James, 2-D J Abberley, 3-S J Crozier



**Champion Mule**





**Champion  
Progeny Group -  
S Lavery**



Report and photos by W Hutchinson

# Co Antrim Progeny Show

Following days with the temperatures soaring to a scorching 30 degrees or so, it was a bit of relief for the sheep and shepherds alike to have some cloud cover and a touch of rain at the Co. Antrim Progeny Show. As ever, the classes were very strong and the quality put in front of the judge, David Brown, Agglethorpe, has improved quite a bit over the last few years, and it certainly made his job difficult.

In the individual section, it was Seamus Lavery from the Orra View flock who was collecting the top accolade with a really smart gimmer shearing by the Cottage "Contraband" tup which has certainly made his presence felt over in Northern Ireland since his arrival five years since, taking several championships himself and siring many more winners along the way. She was also part of the progeny champion group, with last year's gimmer lambs following up their success and taking the championship again, making it that four years in a row that the Cottage tup has taken the progeny title, which must be some kind of record. And just to prove the point of how good his breeding is,

Seamus also took the reserve progeny championship with a homebred son of the Cottage tup which was out of a Tanhouse sired ewe, which he retained and gave eight Blue ewes, and his trio of tup lambs certainly caught the eye, and pushed them, as a group into the reserve place.

The reserve champion in the BFL section went to Richard Graham, Tullyvallen, who was making his debut at the show, with a ram lamb. This came top of the pile in the tup lamb section, with some 21 sheep in, showing great strength and quality throughout. This powerful lamb from Tullyvallen is by the legendary Z4 Hundith, with Richard buying some semen and getting himself a set of twins out of a Jack Lawson ewe he bought at Carlisle by the Z5 Hundith. He was also the champion at the Castlewellan Show and was heading to the Ballymena sale. It was a good day for the Z4 breeding, as he sired the gimmer lamb first prize for Michelle Wright, and at the same time the Z4 Mule lambs were picking up the tickets at the Penrith Progeny Show.



**Breed Champion**



**Res. Champion**





**Champion  
Mule  
Progeny Group -  
J Mills**

#### **Bluefaced Leicester Open Class Results**

**Breed Champion** - S Lavery **Reserve Champion** - R Graham

**Ram any age** - 1-E Loughran, 2-E Loughran, 3-S Lavery

**Shearling ram** - 1-S Lavery, 2-E Loughran, 3-J Adams

**Ram lamb** - 1-R Graham, 2-S Lavery, 3-S Lavery

**Ewe** - 1-G & J Loughery, 2-H Henry, 3-M Wright

**Shearling gimmer** - 1-S Lavery, 2-S McGarel, 3-R Loughridge

**Ewe lamb** - 1-M Wright, 2-G & J Loughery, 3-J Adams & Sons

**Group of three** - 1-S Lavery, 2-M Wright, 3-G & J Loughery

#### **Progeny Results**

**Champion Group** - S Lavery

**Reserve Group** - S Lavery

**Three shearling ewes with their sire** - 1-S Lavery

**Three ram lambs with their sire**

1-S Lavery, 2-J Adams & Sons, 3-E & P McCormick

**Three ewe lambs with their sire**

1-J Adams & Sons, 2-E & P McCormick, 3-A Stewart

In the keenly contested Mule section, James Mills and son Jason had a great day, taking the champion Mule and then taking a step up from last year to win the Mule progeny show too, and when going head to head with the BFL progeny champions, blowing them away too! These lambs, with some exceptional colour, caught the judge's eye big time. The Mills are based in Ballytober, and breed Blackies and Mules, selling around 200 gimmer lambs each year at Ballymena, where they have won the last couple of years. This is the third time they have shown here, and the sire to the lambs E26 Firth, was picked out by 14 year old Jason, and bought at Kelso last year for £2400. He is by the D4 Tanhouse Farm and out of a ewe by A13 Kirkby Redgate.

The sun did break through the cloud for a while at least, but the weather remained hot, as did the competition in each and every class. Each year the standard steps up a notch, and it is becoming one of the bench mark shows in the BFL calendar, and long may that remain the case.

#### **Mule Open Class Results**

**Breed Champion** - J Mills **Reserve Champion** - V Anderson

**Ewe any age** - 1-M Wright, 2-E Murphy, 3-G & J Loughery

**Ewe one year old** - 1-V Anderson, 2-G & J Loughery, 3-V Anderson

**Ewe lamb** - 1-J Mills, 2-J Mills, 3-J Mills

**Group of three** - 1-V Anderson, 2-M Wright, 3-G & J Loughery

#### **Progeny Results**

**Champion Group** - J Mills **Reserve Group** - G & J Loughery

**Three ewe lambs with their sire**

1-J Mills, 2-G & J Loughery, 3-J Adams & Sons


Flock 3320

# Tanhouse Farm

Featuring The New Addition To Our Flock

## F3 Lawson

Jointly owned with W J Douglas,  
Upper Hindhope, Jedburgh. Prefix - FAIRLOANS.



Wishing all our customers the very best for 2015.

## J Thomas & Son

Tanhouse Farm, Dolau, Llandrindod Wells, Powys  
Tel: 01597 851621





**Champion  
Progeny Group -  
M & C Drummond**



Photos by Ron Stephen

# Perth Progeny Show

This year's Northern Progeny Show was hosted by Perth Show, and the Central Scotland location attracted both quantity and quality with a great show of over 110 Bluefaced Leicesters.

Perth Show were great hosts providing marquees to house the progeny show in, which were very much appreciated on a typically wet Scottish summers day. Judge for the day was renowned breeder Nicky Robinson, Cocklaw flock, Northumberland.

His champion in the individual section was a gimmer from A & J Adam, Glamis flock, Forfar. She was sired by Middle Dukesfield E1, and out of a ewe sired by Craighall Z1. Reserve in the individual section was a ram lamb from R K Bryce & Son, and he was sired by Drinkstone E2, and out of a ewe by a Glenelg sire.

**Breed Champion**



In the progeny section, it was a pair of sharp three crop ewes from M & C Drummond, Cassington Flock, Maybole that took the championship. They were twins sired by the top high indexed ram Myfyrian Blue Dragon

**H&H** HARRISON & HETHERINGTON  
Farmstock Auctioneers, Brokers & Valuers

## SALES OF 2000 BLUEFACED LEICESTER SHEEP

### CARLISLE

**Monday 19th January 2015**  
Show and Sale of in-lamb  
registered females

**Friday 9th October 2015**  
Autumn show and sale of  
registered rams and females

**Monday 19th October 2015**  
Sale for all classes of  
rams and females

### KIRKBY STEPHEN

**Saturday 3rd October 2015**  
Show and Sale of  
rams and females

### LAZONBY

**Saturday 10th October 2015**  
Show and Sale of  
rams and females

For all other up to date sales and  
information visit our website -  
[www.harrisonandhetherington.co.uk](http://www.harrisonandhetherington.co.uk)

**H&H** An H&H Group Company

Tel: 01228 406200 Fax: 01228 406201  
[www.harrisonandhetherington.co.uk](http://www.harrisonandhetherington.co.uk)  
Borderway Mart, Carlisle CA1 2RS





**Res. Champion**

B10 and out of a ewe sired by Teviot W1 Elite. Taking the reserve progeny was the champion in the individual section with its twin sister from A & J Adam, Glamis flock, sired by Middle Dukesfield E1 out of a ewe sire by Craighall Z1.

#### **Bluefaced Leicester Results**

**Breed Champion & Female Champion** - A & J Adam

**Reserve Champion & Male Champion** - R K Bryce & Son

**Reserve Male** - A McIntyre

**Reserve Female** - M & C Drummond

#### **Ram Above One Shear**

1-A McIntyre, 2-D A Douglas,

3-R K Bryce & Son

#### **Shearling ram**

1-M & C Drummond, 2-D & M MacNiven,

3-G MacKenzie

#### **Ram lamb**

1-R K Bryce & Son, 2-M & C Drummond,

3-A McIntyre

#### **Ewe**

1-M & C Drummond, 2-D A Douglas, 3-D & M MacNiven

#### **Shearling gimmer**

1-A & J Adam, 2-D & M MacNiven, 3-M & C Drummond

#### **Ewe lamb**

1-R & H McNee, 2-A McIntyre, 3-A & J Adam

#### **Progeny Results -**

**Champion Group** - M & C Drummond

**Reserve Group** - A & J Adam

#### **Pair of ewes sired by the same sire**

1-M & C Drummond, 2-W M Fotheringham, 3-D & M MacNiven

#### **Pair of gimmers sired by the same sire**

1-A & J Adam, 2-M & C Drummond, 3-D & M MacNiven

#### **Pair of shearling rams** - 1-D & M MacNiven

#### **Three ram lambs sired by the same sire** - 1-A & J Adam

#### **Three ewe lambs sired by the same sire**

1-M & C Drummond, 2-A & J Adam, 3-G MacKenzie

#### **Pair of lambs with their sire**

1-A McIntyre, 2-D & M MacNiven, 3-D A Douglas



Copyright: www.bournphoto.co.uk

# Elian

**Flock 2832 - G P Williams & Co**

**Dewi Williams : 07831 340834 / bryndansifarm@btinternet.com**

**Breeders of Bluefaced Leicesters and producers of Welsh Mules renowned for their prolificacy and longevity. Thank you to all who have purchased our stock this year.**



**Winner of the Arthur Yeats Trophy - Builth Wells '14**



**Top priced shearling - Builth Wells '14 - Elian F86 - 2250 gns**





**Champion  
Progeny Group -  
S A & R P Jones**



# Welsh Progeny Show

Photos by John Eveson

Welshpool Livestock sales kindly hosted the region's 2014 Progeny Show with sponsorship generously provided by Animax's Iwan Davies. An excellent attendance of exhibitors gave south Wales judge Tudor Harries an epic judging session, with as high a standard of sheep as ever on this noted day in the showing calendar. In the showing classes the overall champion was awarded to Elfyn Owen, Cernyw flock for his first prize recorded ram lamb. This solid, stocky, stylish lamb 1070/G1 was sired by the famous Cernyw "Muscleman" C15 who has produced a series of excellent rams for Elfyn. This ram lamb is being retained for breeding in the Cernyw flock. It's dam is a ewe purchased from Phil May of the Derwenlas flock showing how well Elfyn's rams perform on different blood lines. The reserve overall and female champion was a clean upstanding yearling ewe from Raymond Harding, Shrewbridge flock. This female is sired by Lydbury Marcus who has done so well over the years and produced many excellent females. Raymond also won the aged ewe class. Reserve male champion went to Aled Jones' winner of the open ram lamb class Craig yr Orsedd G1. This lamb was

sired by Arkleby B1 out of 3363/Z69. This ram lamb is a full brother to the ram lamb 3363/E1 which won the champion progeny group in 2012. Reserve female champion was achieved again by Craig yr Orsedd with the very sharp first prized ewe lamb sired by 3363/E25 a twin to E1. Phil May also had great success winning the aged ram class in partnership with J Williams and then going on to win the yearling ram class.

The progeny classes were fiercely contested with an excellent display of groups of Leicesters from all the breeders present. The Championship was contested between four excellent progeny groups. First prize winning group of three ram lambs from Elfyn Owen sired by Cernyw C15. First prize yearling ewes sired by Lydbury Marcus from Raymond Harding. First prize group of three ewe lambs from Aled Jones sired by Craig yr Orsedd E25, and again first prize recorded ram lamb and ewe lamb show with their E25. Emerging as overall champion group was Aled's group of three ewe lambs. They were sharp and upstanding and their sire Craig yr Orsedd E25 himself was one of three winning ram



**Breed Champion**



**Res. Champion**





**Champion  
Mule  
Progeny Group -  
S Abberley**

lambs in the 2012 progeny show. This ram was retained after suffering a leg injury. Winning champion progeny group this year makes it a hat trick for Aled's Craig yr Orsedd flock with wins in 2012 and 2013 for Arkleby B1 progeny and this year for E25.

#### **Bluefaced Leicester Open Class Results**

**Breed Champion & Male Champion** - E Owen

**Reserve Champion & Female Champion** - S A Harding

**Reserve Male Champion** - S A & R P Jones

**Reserve Female Champion** - S A & R P Jones

**Aged Ram** - 1-P May & J Williams, 2-M/s Lane & Wood, 3-S A Harding

**Shearling ram** - 1-P May, 2-M/s Lane & Wood, 3-P Davies

**Ram lamb** - 1-S A & R P Jones, 2-S A Harding, 3-E Owen

**Ram lamb - Performance Recorded (Not to have been shown in previous class)** - 1-E Owen, 2-S A & R P Jones, 3-S A & R P Jones

**Aged Ewe** - 1-S A Harding, 2-J McLeod, 3-P May

**Shearling ewe** - 1-S A Harding, 2-J McLeod, 3-M C Roberts

**Ewe lamb** - 1-S A & R P Jones, 2-S A & R P Jones, 3-E Owen

#### **Progeny Results**

**Champion Group** - S A & R P Jones **Reserve Group** - E Owen

**Three ram lambs with or without their sire**

1-E Owen, 2-S A & R P Jones

**Three shearling ewes by the same sire**

1-S A Harding, 2-E Owen, 3-P May

**Three ewe lambs with or without their sire**

1-S A & R P Jones, 2-S A & R P Jones, 3-P May

**Recorded ram lamb and ewe lamb to be shown with its sire**

1-S A & R P Jones

The Mule classes were judged by prolific Mule breeder Mr Ken Jones. Winning the days individual champion was Stephen Abberley, Old Hemley flock with a smart, upstanding coloured ewe lamb. This again was a hat trick with Stephen and family winning the championship for the third consecutive year. Reserve overall champion went to Elfyn Owen with a powerful whitefaced Mule ewe ending an excellent day for the Owen family. The whitefaced ewe lamb class was won by Stuart Lane with a strong sharp sheep. The Mule progeny overall championship was also won by Stephen Abberley completing a very successful day

for the Old Hemley flock. These homebred ewe lambs standing with excellent legs, character and strong clear markings were the judge's choice for the day. Standing reserve champion Mule group were three very smart well grown whitefaced ewe lambs from S Lane & C Wood. These ewe lambs were a real credit to their stockmanship especially as it was only their second progeny show. The talk of the day was the quality of the sheep and strength and depth of the showing classes.

#### **Mule Open Class Results**

**Breed Champion** - S Abberley **Reserve Champion** - E Owen

**Mule Ewe** - 1-E Owen, 2-E Owen, 3-G Roberts

**One Mule ewe lamb (Coloured type)**

1-S Abberley, 2-G Roberts, 3-S Abberley

**One Mule ewe lamb (Whitefaced type)**

1-S Lane & C Wood, 2-S Lane & C Wood, 3-G Roberts

**Progeny Results - Champion Group** - S Abberley

**Reserve Group** - S Lane & C Wood

**Ram with three Mule ewe lambs (Coloured type)** - 1-S Abberley

**Ram with three Mule ewe lambs (Whitefaced type)**

1-S Lane & C Wood, 2-E Owen, 3-S Lane & C Wood







# Performance

## Recording is as easy as ABC

**As the demand for performance recorded Bluefaced Leicester rams increases, the Association is looking to encourage other flocks to get involved.** Some breeders are reluctant to start recording as they feel that there will be a lot of work involved, and this is not the case. Most of the paper work involved is what most breeders already record - date of birth, birth type, sex etc. Recording birth weight is not required in Bluefaced Leicesters. The first weighing is the eight week weight, and this isn't as difficult as it sounds either. They can be weighed in a large window from six weeks to 12 weeks, and so usually the flock's whole lamb crop can be weighed on the same day, and the data is then corrected by Signet. The only other task is the scanning, and this done in the beginning of August by a contractor. The lambs are also weighed that day, and that is more or less it. Signet will then do the number crunching, and get the results back to you.

**Three breeders tell you their thoughts on recording, Matthew Seed, Phil Davis and Gareth Roberts.**

### ● Matthew Seed - Auchry Flock

One of our main breeding objectives at Auchry is to produce rams suitable for the commercial market. We believe a top pedigree sheep should also be a top commercial breeding sheep. To this end, there are two main points we consider:

A ram should be functional, i.e fit to go out and serve ewes. Visual assessment is vital here - a ram must be strong, and structurally sound. He must have sound legs and good pasterns.

Secondly, he must have the desired characteristics required to cross with a hill breed and produce a Mule, and obviously a visual assessment is also important - colour, style and quality of skin. Equally important is milk yield, in particular eight week weight. A lowland Mule ewe must be capable of rearing two lambs. Also growth rate and muscle depth - efficient lowland units will want to see lambs sold fat off their mothers at good carcase grades, and the terminal sire choice will still only provide 50% of the lambs genetics.

I believe we are managing to produce rams which can hold their own in the show ring, and have performance data to help the customer, and we have competed well at local and national shows and sales all season.

We do not find recording increases our workload much at all. We weigh our lambs regularly as I'm sure most breeders do, so there is just the scanning extra, which only takes a few hours anyway.

We tend not to take too much notice of the index figure for selecting females to retain, but prefer to look at specific EBVs for traits which



**Performance Recorded Ram Lamb bred by G Roberts**

we consider important in our flock, in particular eight week weight, scan weight and muscle depth. We believe this is helping us to achieve what we want from our flock, and have been pleased this year as all our ewes reared two lambs, and our lambs were as strong as anybodies at the sales!

## Performance Recording

Is As  
Easy As  
ABC



- A** Record Lambing Details.
- B** Weigh Lambs At 8 Weeks.
- C** Weigh And Scan At 21 Weeks.

**It's Simple - Start Today. For further information -  
Contact - Myrfyn Roberts 0788 7891678**



### ● Phil Davies - Gornal Flock

I started performance recording five years ago, driven by the interest of my commercial ram customers (some younger farmers) especially those looking to grow sheep off grass by improving their Mule flock. The quality of their ewes is important, but also the easier fattening of their Mule ram lambs is becoming a big selling factor in profitability.

I entered the scheme with some hesitation as to the results I may achieve, but without a doubt, my sales privately, and through breed sales have increased dramatically from new and repeat buyers.

It is also very important to use estimated breeding values (EBV) as a management tool, as well as from a marketing angle as it has become apparent that some families constantly breed higher performance, quicker growing lambs than others.

Obviously it is very important that the conformation and appearance of the animal is critical to customers whether pedigree or commercial. A ram or a female with high EBV, and great breed characteristics will obviously have much added value. The scheme operated by Signet is very simple, but effective. I weigh and record the lambs at approximately eight weeks, and then personnel from Signet scan and weigh the lambs at 21 weeks. Both male and female lambs are recorded for total flock improvement.

The system is very cost effective (partly subsidised by BFL Association) and is a tremendous help with flock recording (ancestry etc) and makes the entering of sheep for sales very easy.

### ● Gareth Roberts - Myfyrian X Flock

Performance recording makes it essential for us to keep good accurate records, and you get a hard copy that you can always refer back to.

**Included are all the pedigree details of each animal, and all details of their dams and sires.**

Everything recorded in one book each year, instead of lots of bits of paper or even worse trying to just remember!

We just have a clipboard handy in the lambing shed to record - date of birth, sex of each lamb, sire, dam, birth weight, and if they get adopted on to another ewe, her details and the tag no of each lamb.

The next time we have to collect information is the eight week weights, and we usually link this up with a dosing day, and doesn't take long when you have them in to do this one extra job. The next weigh day links up with the scanning day at around 21 weeks. This is a good time to make sure all paperwork is correct and tidy up any loose ends before Signet pull all these details together and present you with a nice tidy reference booklet. That's it done for another year, so it really is very easy to do. We reap all the benefits of Performance Recording our Bluefaced Leicesters as we retain nearly all our Mule ewe lambs for our own commercial Mule flock. The Myfyrian flock has recorded for nearly 20 years and we can see the benefit in the Mule ewe.




Flock 4447 - MV Acc.


# Auchry

Performance recorded  
Bluefaced Leicesters


## Performance That Speaks For Itself



**Auchry G6**  
(Sire: Cassington D1 Elite +)  
Sold at Builth Wells for  
£2570 to the Meudwy flock.



**Auchry F3 (ARR/ARR)** (Sire: Cassington D1 Elite +)  
1st prize shearling - New Deer Show. Semen Available.



**Auchry G11**  
(Sire: Craig Yr Orsedd E1)  
1st prize ram lamb - Turriff and  
Black Isle, sold - Wanstead flock.

Thank you to everyone who purchased our stock and we hope they do well.  
Enquiries and visitors always welcome - Matthew Seed - 07751 365451 / 01888 544010





Ifan Owen

## 50th Anniversary Youth Scholarship winner - Ifan Owen's Visit To New Zealand

I am privileged to have been the recipient of the Bluefaced Leicester Association Young Scholarship Fund as they celebrated their 50th Anniversary, and I would like to thank the Association for this award. The scholarship fund went towards travelling costs on my visit to New Zealand, where I learnt how sheep breeders there make good use of genomic technology within their flocks.

### Geonomics

Geonomic technology is being used in a number of areas within the sheep industry in New Zealand: 'Myomax gene' (improving meat yields), 'sheep 50K and 5K' (markers for DNA) for better selection and faster genetic gain, and 'Shepherd plus' (most commonly used).

**Shepherd plus:** This technology enables the parents of lambs to be determined very accurately, without also having to record ewes in each mob. This makes the whole of the lambing process much easier for the shepherd, but even better, its making sure that the parentage is right. Andrew Tripp of the Nithdale Flock commented "I always thought I did a good job at matching lambs to ewes at lambing time, but it was never 100% accurate". This technology will pick up any progeny that are sired by stray rams that might have got into the mobs of ewes. "The first step in breeding stud sheep is making sure we have the parentage right".

**Sheep 50K:** This is a relatively new technology that is developing quickly. Nithdale genetics have tested their sires for Sheep 50K for the 5th year, and the number of traits that they can now get genetic information based on the animal's DNA continues to increase. These traits now include fertility, worm resistance, weaning weights, carcase weights, wool weights, fat and meat yield and Facial Eczema tolerance. These 'molecular' breeding values are then blended with existing estimated breeding values (EBV's) based on performance information. Andrew said "The main benefit is that the information we have to use to make selection decisions on (culling or sires to use) is more accurate". By being able to make better, informed selection decisions, flocks will be able to make approximately another 50% genetic gain over and above what they are already making. The results farmers receive include a summary with a percentage rank based on all the sheep that have been tested. Out of the approximate 3000 Romney sires in New Zealand tested to date, one sire Nithdale flock is using ranks in the top 1% for weaning weight and carcase weight, the top 1% for wool weight, the top 4% for eye muscle area and meat yield and the top 5% for WormFEC. Andrew added "Future of sheep farming will have more emphasis on improving performance and low

cost input systems, particularly on extensive properties where change in land use is limited".

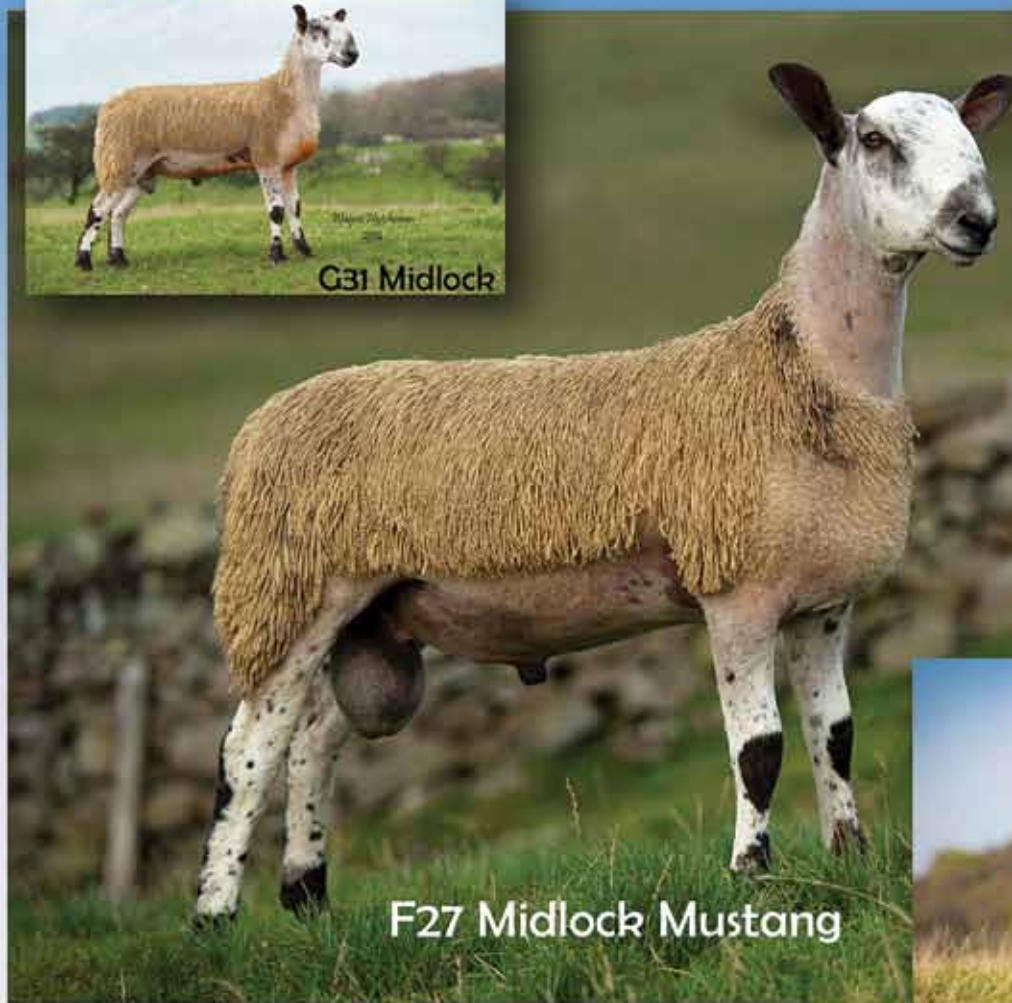
### Ram Sales and Performance Recording

A ram ordering form is sent out where the client can specify what kind of ram(s) they're after, based on figures, before returning the form. The breeder categorises all of the rams fit for breeding according to indexes and allocates a set price on each category. The price of a two tooth ram of a maternal line from a breeding company 'Focus Genetics' would be \$1500 for the top category and \$800 for the bottom, consisting of four categories. The sale category changes as genetic progress is gained each year. For stud breeders Andrew and Russell Welsh, the 'on farm selling routine' is to group the rams in different paddocks according to their category and gather a selection of the mob at random into the shearing shed, "we do this for every client, this way every client gets a different choice of rams" said Andrew Welsh. The buyer then gets hands on in the handling pens where the figures of each animal are displayed on a screen, with individual traits being shown as EBV's. "We go through our rams as hoggets to give them a 'once over' check, and then culling for any weaknesses, as we do not want any client to take a ram that is not fit for breeding" said Russell Welsh. Although some stud ram lambs are culled, information such as meat yield can be recorded and introduced into the database and contributed towards the index of its sire, which in my opinion is a great way of adding value since its more than just a 'fat lamb'. Russell Welsh from the TEFROM stud has seen a drastic change in the sheep industry over the last 15 years in New Zealand. Sixteen years ago, he and his son Andrew decided to take a big step which was to start his own composite breed, based on their pure Romney flock. "There were too many stud breeders concentrating on breeding rams for show, which led to rams not performing, and not doing what they were supposed to" said Russell. Most of the ram studs in New Zealand are now performance recording, especially the ones on the larger scale. Russell foresees the same change will happen here in the UK.

Having had the experience of seeing what's happening in New Zealand, and what could happen in the UK in the future, I am keen to pursue with breeding top performing sheep and having proof of that through performance recording. In my opinion, performance recording is just another trait you breed from, and it is only part of the 'perfect sheep' you are after as a breeder. Now's the time for breeders to grab it with both hands, and embrace the next challenge if we are to see the breed holding its place as the leading crossing sire throughout the British Isles in years to come.



# Midlock



Sons of Mustang — Catching the eye all back end!

Thank you all our customers this year, and hope you have an exciting lambing time!



G1 Midlock—by E1 Hewgill



G56 Midlock—by E1 Bull & Cave

**Contact Allan on; 07796 302467**

**Females for sale at the Carlisle January in lamb sale, including ewes in lamb to Mustang**





# Southern Ireland Ram Sale in Ballinrobe

**Report by  
Thomas Staunton**

**Female class.  
Prize Winners  
L to R: W Dowling  
Furryhill (third),  
K Staunton Mask  
View (first and  
champion of the  
sale) and  
P McGrath,  
Caoramor (second).**



There was a flying trade at the annual Bluefaced Leicester show and sale in Ballinrobe, Co Mayo which is now in its sixth year. This was on the back of a solid trade for Mule ewe lambs and ewe hoggets at Ballinrobe earlier in the autumn. The popularity of the Bluefaced Leicester in Ireland is ever increasing with many farmers changing their approach and deciding to use a more prolific and milky type of sheep. All flocks turned out a brilliant show of sheep that were judged by Mr Eamon McCormick (Brablagh Flock) Cushendun, Co Antrim. It was a difficult task to separate some very evenly matched sheep, and we thank Eamon and his son Nial for travelling the long distance. The Champion of the show was a ewe lamb from Tom Staunton and the Mask View flock. This daughter of Firth E13 had good strength and colour and later sold for 1050 Euros. The winner in the ram lamb section was a great lamb from Kieran McGrath (Caoramor) which also took Reserve Champion of the show. This lamb later sold for 950 Euros to Emmet Sweeny (Quigabar). The winner in the aged and shearling ram class was an aged ram from the Mask View Flock. This ram was bred by the Sandholes flock and sold for 1410 Euros. The top priced shearling from the Aughafoy flock sold for 1520 Euros, and the sale average was 838 Euros for 30 shearlings sold. The top priced ram lamb from the Mask View flock sold for 1100 Euros with an average of 554 Euros for 34 ram lambs sold. The eight females sold averaged 436 Euros.

There was a tremendous atmosphere created by a bumper crowd which led to a very successful sale in Ballinrobe. Many shearlings and aged rams surpassed the 1000 Euros mark. The sale also broke all its records with record prices for shearlings, ram lambs and females. The future for the sale and the breed looks very bright for the South of Ireland Bluefaced Leicester Club.

**Middle Photo: Ram lamb class prize winners  
L to R: P Sammon, Firmount (third), P McGrath  
(first) and K Staunton (second).**



**Bottom Photo: Aged and shearling ram class  
winner - K Staunton, and Judge E McCormick.**






# Publicity News

The only certainty in agriculture is the uncertainty of it, as we look back on a very challenging sale season for both Bluefaced Leicesters and their progeny the Mule, it is difficult to pin reasons or trends. The trade at some sale centres seem to be on the decline and vendors seem to converge on a few "super sales" that this year didn't end until the dark of night or even the next morning. The price we get for our stock seems to rely on a cocktail of factors and circumstances - the weather, the value of the pound, and the drop in supermarket share prices - the list is endless. One of the biggest factors that affected our lamb price this year was a little fall out our government had with Russia. The UK politicians and press seem to have forgotten all about it now, but unfortunately the Russians haven't, as they are still not buying our lamb hides. This in turn is reducing the price of prime lambs by about £8 per head this year, depressing the trade of the whole sheep industry. When we listen to the experts and advisors in our sheep industry, they tell us that we really shouldn't concern ourselves too much about poor global prices or political unrest as we as sheep farmers can do little to resolve these problems, and we are better to concentrate on the things we can do something about - increasing the efficiency in our business and to market our stock to the best of our abilities.

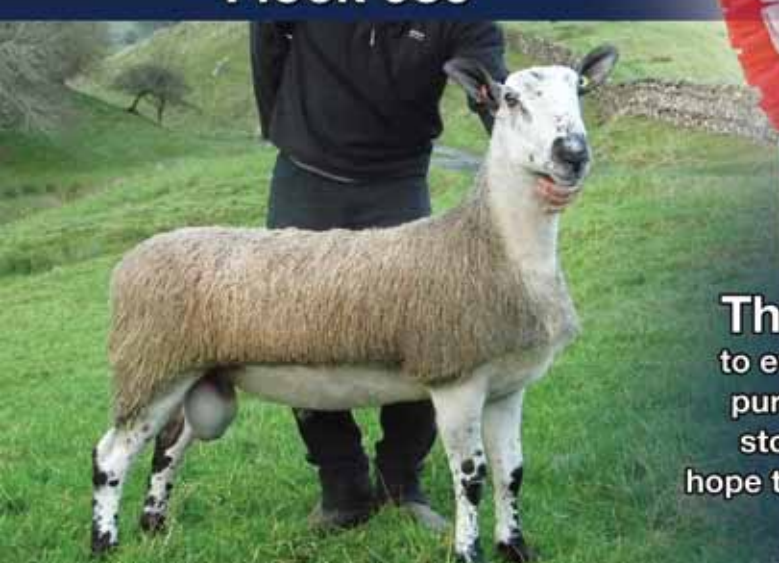
Promotion of our breed must be treated in the same way. We have no way of knowing what is around the corner for 2015 - with the uncertainty in our future role in the EU, supermarkets under pressure to maintain profit and concern over future agricultural support, it has never been more important to focus our promotional efforts. We need to continually identify our emerging competition and challenge their claims. We have to keep proving the outstanding ability of the Mule even though we may know the Mule is the best, as there will always be a constant supply of competitors that have to be seen off. Individual breeders promoting their own stock to their own market has never been as important as it is today. As I previously mentioned, BFL sales this year have been challenging, but numerous flocks have had a very successful sale season. For these flocks, promotion in its many guises has paid off. Flocks promote themselves in many ways - in the show ring, in the Mule sale ring, in adverts in papers and magazines and most recently on social media - Twitter, Facebook and the Association's own Mulebook. Promotion is obviously only part of it, the product must be right, but

promotion is the tool that finishes the job. Promotion of the Mule in particular must focus on the youth, the vast majority of Mules sold are sold to sheep farmers that have always used them and often bought from the same Marts or even the same breeders every year. There is little point preaching to the converted. As margins become tighter, and the near certainty of reduction of government support hits home, the next generation of farmers are not going to do things as their fathers did without questioning it, and at least considering the alternatives. By tailoring promotion and advertising to this small niche, we can convince tomorrow's sheep farmers that the modern Mule in its many forms is the ewe to deliver profit and efficiency to their businesses.




## Hewgill

### Flock 980



**Thank you**  
to everyone who  
purchased our  
stock, and we  
hope they all do well.

980/G50 Hewgill Hercules



Left & Right: Females for sale in January

**Females for Sale in January at Hawes and Carlisle.**  
Enquiries very welcome  
M/s Lord, Low Dowgill, North Stainmore, Kirkby Stephen,  
Cumbria CA17 4EX Tel: 01768 341686





# Mules produced from Rough Fell ewes

Written by  
Jayne Knowles

The Rough Fell's ability to produce big, milky Mules as an alternative to other types of Mules is not as widely appreciated as it could be. Mules produced out of Rough Fell ewes by a Bluefaced Leicester tup have been a steady earner for many years.

But now, more of the Rough Fells Association's 220 or so members are now responding to the growing demand for these Mules which are well capable in most cases, of being lambed as hogs. Although I am keen to make it clear from the outset that any promotion of the Rough Fell Mule is not a 'Rough versus NEMSA or any other horned Mule exercise. It is simply to raise awareness of it as an alternative, acknowledging it is not in the same league in terms of available numbers.

We also use Texel tups on the pure Rough Fells to produce prime lambs, but the Bluefaced sired Mule gimmer lambs make more, and the wethers have a really good carcase at about 21kg dw. Last year our Rough Fell Mule wethers averaged £75. Our top price this year for Rough Fell Mule gimmer lambs in the Ambleside Fair was £160, and we averaged £96, but it is only awareness, and demand that drive the price, and it is only going to go one way as more people appreciate they are every bit as good as other Mules, and will fit well into a wide range of management systems.

Their features are pretty much the same, but they tend to have a bigger frame and more bone. Some can have more white on the face than the Swaledale-bred Mules, but the majority are every bit as 'flashy'. However, it's the carcase that makes the money in the end. The size and shape of these Mules will sell them. They are normally sold at Kendal Auction now (junction 36 Crooklands) Ambleside Fair in September, Penrith, Bentham, Hawes and Kirkby Stephen Auctions. I would expect this year there will be topside of



A Rough Fell ewe with her Mule lambs

2000 on offer, and they are sold to buyers all over the country from Cumbria to as far as Devon and Somerset.

I acknowledge the Rough Fell was often perceived as a more woolly sheep with a long thick fleece, but said the modern Rough Fell had much less wool, and it was therefore no detriment to the attractiveness and jacket of the resulting Mule. Pure-bred Rough Fell ewes, on account of their frame, can make significantly more than most horned breeds as culls, and the sale of draft ewes is also an important contributor to farm income.

A couple of years ago, a Lancashire farmer thought he would try some Rough Fell Mules and said "I have not really had Rough Fell Mules for that long yet, but they do seem to have more bone and they are really good mothers. I think they have a better shape than some Mules, and they also wear very well in the mouth, but I do also still like the Dalesbred Mules."



*Rough Fell*  
**Mules**

Contact - Brian Knowles Tel: 0776 6145345 Email: jknowles666@gmail.com  
or Ben Williams - 0797 9142809.





Prolific  
**Cernyw**  
Flock  
Progressive Breeder

Thank you to everyone  
who purchased our stock  
and we hope they do well.

Elfyn Owen a'i Feibion  
FFrith Arw, Llanddoged,  
LLanrwst, Conwy LL26 0LZ

01492 641773 / 0787 0886543

Email:

cernyw.owen@btinternet.com



### What A Lady!

Lambing twice this year. February and September.  
Her ram lamb (G1) born in February by Cernyw  
"Muscleman" C15 was champion at this  
year's Welsh Progeny Show.

# Gornal Blues

A forage and grass managed flock, bred for natural  
growth, natural fleshing, width, legs and longevity.

**TOP  
UK  
INDEX  
Flock**

Featuring.....

Gornal

*Bluegrass*

3543/G26

**Index 258**

Photo taken after  
serving 20 ewes

Other stock sires:

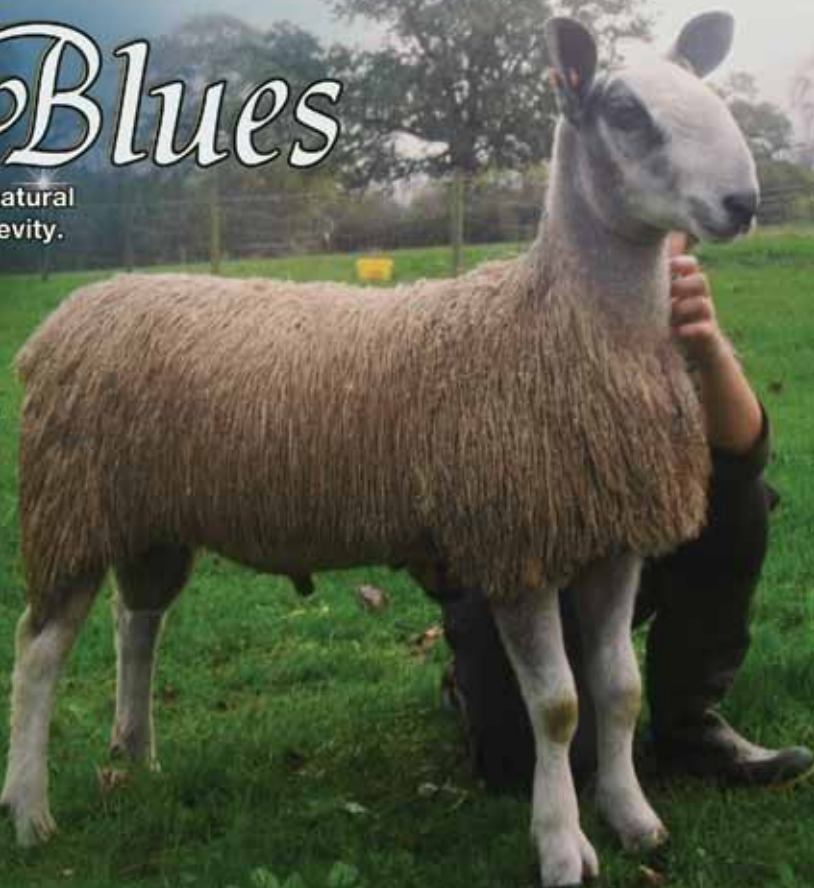
Gornal Blueblood

3543/F3 **Index 236**

UK No. 1 stock sire

Auchry Allstar

4447/F4 **Index 203**



Stock for sale at all times - contact - The Davies Family, The Gornal,  
Four Crosses, Llanymynech, Powys Tel: 01691 830486 / Email: david.davies790@tesco.net

[www.blueleicester.co.uk](http://www.blueleicester.co.uk)



# News From Your Bluefaced Leicester Regions

## North East

As I start to write my very first report for the North East on a cold and dark night, I am reminded that the year is quickly drawing to a close, but what a year it has been... In the first week of February, my friends in the North East kindly nominated me for Chairman and a few days later I got married, all before the start of lambing!

Our agricultural events of the year kicked off with the Great Yorkshire Show on the 8th, 9th and 10th of July. The sun was looking down on Judge Cecil Hutchinson for most of the time until the heavens opened, and he had to find his coat. On the day there was one man with a big smile on his face, and that was John Stott as he came away with Breed Champion, and Reserve Champion. The Breed Champion was a very smart gimmer lamb by the E1 Tanhouse Farm and the Reserve Champion was a tup John shared with the Stenton family. Thanks must go to Jim Stenton and family for providing the sheep for the show stand.

We then moved on to the pre-show and sale at Hexham on the 24th September. The champion was a strong and well put together shearling from Alan and Peter Forster (Lowes Fell). This tup went on to make £1,150. Then at Hawes on the 2nd October, we had nearly 900 sheep to be sold in one day. It was Welsh breeder Michael James who came away from the pre-show with not only the Champion, but the Reserve Champion too, with each selling to £6,000 and £4,000 respectively. As at previous sales it was the Midlock flock that had everyone's attention with the G33 lamb selling for £15,000 and a G35 for £11,000, with a very impressive average of £6,683.

I don't think there is anything left to say apart from wishing you all a very Merry Christmas and all the best for the New Year.

**Oliver Scown, North East Chairman.**

## North West

As I write this report for the North West Region, it is warm, wet and windy, but we have had a great Spring, Summer and Autumn. The grass has grown well and stock on the whole have done very well.

The first summer event was Penrith Show hosting the Progeny Show on Saturday 26th July 2014. Once again the weather was perfect, and a pleasure to be outdoors. We had a very large entry, the most ever. Elfyn Owen, the judge for the Leicester classes had a lot of work to do before lunch. The North West members enjoyed a successful day with Scott Thomason taking Champion with a gimmer shearling and Reserve Champion with a tup lamb. He also took Champion Progeny Group with three gimmers by the same sire. The Reserve Champion Group went to John Stott with three ewe lambs and their sire.

The Mule section was judged by Carl Stephenson and Andrew Nicholson. The Champion was a Mule ewe from Ron and Fran Wilson and the Reserve Champion was a Mule ewe lamb from Neil Marston. The Champion Progeny Group was from Michael James with three

Welsh Mule ewe lambs shown with their sire. The Reserve Champion Group came from J C & E Pedley & Son. A big thank you to the judges and stewards and also to the exhibitors for taking part.

### Sales

**Longtown:** Cumberland and Dumfriesshire Farmers Mart held its Inaugural sale on 17th September 2014. A good entry of 105 sheep met a good trade, with both traditional and crossing types selling well. Vendors and buyers were both satisfied. The Overall Champion was a tup lamb from Mosser Mains selling for £900 and the top price was a tup lamb from Midlock selling to £3500.

**Penrith:** This was held at Penrith Auction Mart on 9th October 2014. A good crowd was present and there was a high standard of sheep forward. The Overall Champion came from Messrs Lord, Hewgill, with a shearling tup which sold for £2800. Top price was a shearling tup from Hewgill which sold for £7000.

**Carlisle:** Harrison & Hetherington, Borderway Mart held their sale on 10th October 2014 with a very large entry of 1100 sheep of which 802 entered were tup lambs. It was a very long day with the judging at 7.30 am and the last sheep went through the ring at 9.40 pm. It was no surprise it was a struggle to sell them with supply bigger than demand with just over two thirds of sheep being sold. Overall Champion was a tup lamb from Quarry House and it sold for £2000. The Reserve Champion was also a tup lamb from Street and it sold for £6500. Top price of the day came from Midlock flock, with a tup lamb selling for £8000.

**Anne Little - North West Region Chairman**

## Wales & South

The cycle has started again, with tupping well under way. As I write this report it is raining and blowing a gale, so let's hope for a mild winter and spring like last year.

The show season started with the Royal Welsh Show judged by Graham Dixon from the Alwinton Flock. The weather was great with the sun shining and some excellent sheep forward for judging. It was Tegwyn Jones who took the overall Championship with a ram lamb sired by D7 Old Hemley, and out of a ewe bought from the Smearsett flock. Elfyn Owen won the Reserve Championship with a ewe sired by his homebred C15 'Muscle Man', and out of a Shrewbridge bred ewe. Then a good evening was had by all at the breed's party.

Then we moved on to Sheep 2014 at Malvern, which is a great shop window for us and a lot of interest was shown at the stand. A big thanks goes to Helen for all her hard work and well done with getting third place in the stand competition.

We held our progeny show again at Welshpool Livestock Market. Tudor Harris, Bonvilston judged the Bluefaced Leicesters and Ken Jones, Lawson judged the Mules. Breed Champion was a recorded ram lamb from Elfyn Owen, Cernyw and reserve went to Ray Harding, Shrewbridge with a shearling ewe. The Bluefaced Leicester Progeny Champion Group went to Aled Jones, Craig Yr Orsedd with three ewe lambs. In the Mule section the Breed Champion went to a coloured Mule lamb from Stephen Abberley, Old Hemley who also won the progeny group.

The sales this year have been fair, with the buyers bidding more on top quality sheep. The Pre-sale Champion of the NSA Builth Wells went to Myrfin Roberts, Myfyrian selling for 2,200 gns. Top price of the day went to Aled Jones at 3,000 gns.

The overall Champion at Welshpool went to Richard Howatson, Clwyd flock with a four year old ewe and top price went to Aled Jones again with 1,300 gns.

The overall Champion was awarded to Elfyn Owen at Ruthin Sale, who also achieved the top price of the day.



Many Welsh breeders ventured up north again to Hawes and Carlisle, where Michael James, Duhonw achieved 1st and 2nd place in the ram lamb section and Overall Champion at Hawes.

We are hoping to hold our AGM alongside a stockjudging afternoon/evening in January. All ideas for the event are very welcome.

Finally, I would like to wish you all a Merry Christmas and a successful 2015. **Michael James - Chairman**

## South West

Similar to the rest of the UK, we here in the South West of England have experienced a great summer and autumn as far as weather conditions are concerned. Good quality grass has grown continuously and the ewes look in excellent condition to take the rams just now as I write.

It was an enjoyable experience for me to attend the Association's AGM in May at Carlisle and feel honoured to be elected as President for the coming year. Ann and I extended our stay when we were up in the North of England to take in trips to the Dales, and to the Lakes which we thoroughly enjoyed. I could have done without the speeding ticket I picked up in Carlisle, but I haven't anyone else to blame.

The show season in the South West got off to a great start at the Devon County Show. Our club treasurer Helen Havill had tremendous success with her show sheep. She not only won the Breed Championship with her senior ram, an Elian tup bred by G P Williams, but her homebred ewe won the female championship as well. When it came to the interbreed judging, these two sheep together with Helen's shearling ram won the Interbreed Group Of Three Championship. She also was placed Reserve in the Pairs Championship and the senior ram was also reserve overall in the individual sheep award.

The autumn breeding sales have seen a brisk trade for the local Mules. The South West Mule group first sale at Tavistock saw K C & J C Heard top the trade with their Scotch Mules at £124. The first ever official sale at Exeter Market was topped by Peter Heard with his North Country Mule lambs at £126. The Bluefaced Leicester Association Show and Sale at Tavistock saw a big improvement in demand for the rams compared with other years. Leyland Branfield, Danesbrook topped the shearling ram trade at 980 gns and had another shearling in at £900 as did Helen Havill with her second prize shearling ram. Peter Heard won the breed championship with his ram lamb.

The annual club sale at Blackmoor Gate Mart saw a solid trade for commercial shearling rams with the top breeders averaging well over £500 per head per pen. The Exmoor Mule ewe lambs were in demand once again at the Blackmoor Gate ewe lamb sale. J R Richards & Son averaging over £90 for the 350 head they had forward. Our Bluefaced Leicesters and the crossbred ewe lambs continue to show increased popularity in South West England which is greatly encouraging.

We now look forward to our annual Christmas Dinner when members meet up for this social occasion, a new venue this year, the Lymington Arms at Wembworthy, and we welcome friends old and new.

**Brian Dallyn - Chairman**

## Northern Ireland

The howling wind and rain beating on my windows outside is a sharp reminder that winter has arrived, bringing an end to a glorious summer and a much appreciated mild autumn.

Our show season kicked off at Balmoral and the judge, Richard Hutchinson, Kirkby Redgate, found his Champion, a tremendous ewe, in the pen of John Blaney, Tievebuaile Farm. This ewe also went on to win the Longwool Championship.

At our progeny show in Co Antrim, the Champion and the Champion progeny group were exhibited by Seamus Lavery. These were sired by his ram "Cottage Contraband", making it four consecutive years "Contraband" has been sire of the progeny Champions. The Champion Mule, a ewe lamb, and the Champion Mule Progeny Group of ewe lambs were exhibited by Jim Mills. These were sired by his Firth bred ram.

Throughout the show season the major honours were won by Hugh Henry, William Bell, Graham & Julie Loughery, Michelle Wright and McCormick Brothers joining the afore mentioned winners.

Once again we had a family themed fun night in Ballymena Rugby Club, a very enjoyable night for all who attended. Special thanks to our secretary, Diane for organising the event and also to Michelle and Elaine for showing us their culinary skills!

Our premier sale in Ballymena was judged by John Park, Forebrae and he found his Champion in my Tullyvallen pen, a ram lamb sired by Z4 Hundith. The judge, with Alec Brown, Macqueston, later purchased the Champion at 1200 gns. Top price in the ram lambs went to Robert Loughridge, selling at 2300 gns to Alec Brown. The Reserve Champion, a shearling ram from the Knockstacken flock of Timothy Wray realised top price of the day selling at 2550 gns. Timothy's pen of shearlings also won the trophy, presented by the Kerr family, for the best pen of sheep in the sale. Female Champion, a ewe lamb exhibited by Alistair Christie sold for 500 gns.

In Armo, judged by Declan McKillop, a shearling exhibited by Robert Loughridge was Champion, selling at 560 gns. Reserve Champion, a ram lamb from Glenane, Eamon and Hugo McKeegan sold at 700 gns. The female Champion, also from Glenane sold at 150 gns.

The Mule sales enjoyed a steady trade this year with averages up on 2013. I would, however, like to congratulate the exhibitors at the sales, not only on the quality of their stock, but also on the time took preparing them for presentation.



**Pictured at the annual dinner dance - Summer Show winners - Seamus Lavery, Hugh Henry, Brendan Blaney, Michelle Wright, Niall McCormick and Julie Loughery.**

Our annual dinner dance in November was thoroughly enjoyed by all who attended and once again many thanks to Diane for organising it. Awards were handed out to our pedigree and Mule sale winners but a special mention to Niall McCormick, winner of the Cydectin Young Handler of the year, 2014. Thanks also to Hugo McKeegan who helped me distribute the awards. **Continued on page 24.**





**Pictured at the annual dinner dance - Overall Champion Flock Competition winners Graham and Julie Loughery with judges Trevor and Steven Duncan**

Our flock competition, judged by Stephen Duncan was won this year by Graham and Julie Loughery, Temain, with Michelle Wright, Mullaghwee reserve. The small flock winners were Eamon and Hugo McKeegan, Glenane.

Finally, many thanks to Diane, the committee, sponsors, members and friends who contributed to our club this year. I shall finish by wishing you all good health and a successful 2015. **Richard Graham - Chairman**

## Scotland

Sitting here on a wet October night with the task of writing my first report as Scottish Chairman, I find it hard to believe where the year has gone.

The Scottish region has had a busy year in 2014. In May Matt Drummond and myself travelled to Smallburns Farm, Elgin with the stand and a pair of gimmers kindly supplied by the Drummond family, Cassington flock for The Grass Tech Event which was organised by The Royal Northern Agricultural Society. This proved to be a very well organised event that gave us a great opportunity to meet some of the members in the North of Scotland as well as some potential new members.

One week later I travelled to Quixwood Farm, Duns for NSA Scotsheep, but unfortunately one thing that couldn't be predicted was the weather which did effect visitor numbers on the day, but it didn't dampen the enthusiasm of the Scottish sheep breeders. The stand was brought out to its usual high standard, and we had four pens of sheep on the stand that were a credit to the breeders that kindly supplied them. I would like to thank the Hall family from Firth flock, Mrs Sharp, Newbigging Walls, Mr Macalpine, Mayfield Farm, Mr Rogerson, Burncastle Farm and the Common family at Crossdykes for taking time and effort to get these sheep ready to such a high standard which is very much appreciated.

The next event on the calendar was the The Royal Highland Show in June that was judged by local breeder Alan Wight, Midlock flock. Alan awarded Breed Champion to a home bred gimmer from Jimmy Bell Cottage Flock, and Reserve Champion to a tup lamb from Neil Marston, Highberries flock. The usual high standard of sheep were on show again this year, and it's a credit to all the breeders that take part.

Moving on to the progeny show at Perth. There was a great turnout of over 110 Bluefaced Leicesters from all over Scotland with sheep coming from as far as Wick in Caithness. The judge for the day was Northumberland breeder Nicky Robinson, Cocklaw flock who awarded Breed Champion in the individual classes to A & J Adam, Glamis flock with a gimmer and Reserve went to R K Bryce with a tup lamb. In the progeny section, the Champion group went to M & C Drummond, Cassington flock with a pair of ewes and Reserve went to A & J Adam, Glamis flock with a pair of gimmers. The progeny show at Perth proved to be a great success with the judge commenting on the great quality of stock put in front of him.

### Kelso Sale

Kelso tup sale again had a great turnout of shearling tups and tup lambs. The Champion was awarded by the day's judge Phillip Teasdale to the first prize tup lamb from the Midlock flock which later sold for £8500. Reserve Champion went to the shearling tup from the Browell family, Quarry house flock. Tups proved to be a great trade at Kelso with 508 shearlings averaging £867.44 and 26 lambs averaging £1081.54.

### Castle Douglas Sale

The day's judge was Ashley Caton who awarded the Championship to a tup lamb from the Wight family, Midlock flock that later sold for £1300 with a lamb from the same pen topping the sale at £5000. Reserve Champion went to a shearling from J & D Blues. Averages were back on the year with purchasers being selective - shearling tups averaged £599.17, and tup lambs averaging £799.84. I would like to congratulate all the Scottish breeders that are leaving their mark at sales south of the border. With a special congratulations to the Wight Family at Midlock that have had a great year topping no fewer than five sales plus two sale Champions. This is a great achievement.

**Stephen Crozier - Chairman**

**For all your Sale & Show news as it happens texted straight to your mobile ... ..Text *follow Bluefaced* to 86444 and follow the instructions.**



**www.twitter.com/bluefaced**



# Show Champions

## 2014



**Above - Great Yorkshire Champion -  
J Stott - Laund  
(Judge - C Hutchinson - Redhill)**



**Below - Royal Highland Champion -  
J & W Bell - Cottage  
(Judge - A Wight - Midlock)**



**Above - Royal Welsh Champion -  
D G I T & M E Jones - Goyalltywi  
(Judge - G Dixon - Alwinton)**



**Below - Balmoral Champion -  
B Blaney - Tievebuaile Farm  
(Judge - R Hutchinson - Kirkby Redgate)**



# Top Prices 2014



Kelso - £8,500 - J Wight & Sons, Midlock  
To: Crow Hall Farms Ltd, Bardon Mill, Hexham



Builth Wells - £3,150 - S A & R P Jones, Craig Yr Orsedd  
To: M/s McClymont, Kirkstead, Yarrow, Selkirk



Longtown - £3,500 - J Wight & Sons, Midlock  
To: G E Carter & Son, Forget Me Not, Carlisle



Hexham - £1,150 - T L Forster & Son, Lowes  
Fell to Howard Farms, High Studdon, Allendale



Ballymena - £2,625 - T Wray, Knockstaken  
To: R Taggart, 73 Dickeytown Road, Ballymena



Ruthin - £756 - E Owen, Cernyw  
To: Roberts Bros, Hengaer Isa, Glanrafon





Castle Douglas - £5,000 - J Wight & Sons, Midlock  
To: N C Marston, Millstone Moor Farm, Cumbria



Penrith - £7,000 - M/s Lord, Hewgill  
To: J Ireland & Sons, Stockhow Hall, Cumbria and  
A G & K F Nicholson, Swinside End Farm, Scales



Hawes - £15,000 - J Wight & Sons, Midlock  
To: A Campbell, Drimsynie, Lochgoilhead, Argyll  
and J Pirie, Blarnavaid Farm, Drymen, Glasgow



Carlisle - £8,000 - J Wight & Sons, Midlock  
To: R Hargreaves, Meadow Bank, W. Yorkshire



Welshpool - £1,365 - S A & R P Jones, Craig Yr Orsedd  
To: R W & J L Edwards, Tyntwll, Llanarmon

Tavistock  
£1,029 - L C Branfield, Danesbrook  
To: P Alford, Cardwell Farm, Tavistock, Devon

Armoy - Joint top price  
£819 - M Wright, Mullaghwee  
to D Semple  
£819 - D McCrystal, Drummuck  
to D McMullan



# Register Of Rams And Ram Lambs

Sold for £1,000 and over at Association Sales in 2014. Sale Show Champions with their sires listed.

## Kelso – 12/09/2014 - Shearlings

### D Sandilands – WHINFIELD

£1,700	2784/F1	Street E2	W Pringle, Yorkston Farm, Gorebridge, Midlothian
£1,000	2784/F4	Street E2	The Campbell Partnership, Burnhouse Mains, Stow, Midlothian
£1,200	65/F10	Burndale C23	R & A Tinto & Partner, Colmslie Hill, Galashiels, Selkirkshire

### J Kay & Sons – HARTSIDE LAMMERMUIR

£1,000	3274/F1	Midlock D21	J W Hogg, Longyester Farm, Gifford, Haddington, East Lothian
--------	---------	-------------	--

### Prof. W A Penny – BOTHWELL

£1,000	3744/F1	Kirkton D1	J W Hogg, Longyester Farm, Gifford, Haddington, East Lothian
£1,300	3744/F2	Kirkton D1	Floors Farming, Roxburghe Estates Office, Kelso
£1,500	3744/F8	Midlock C11	Gascoigne Farms Ltd, Gascoigne Farm, Broughton, Biggar
£1,500	3744/F15	Dawyck B8	Burncastle Farming Co Ltd, Burncastle Farm, Lauder, Berwickshire
£1,100	3744/F4	Kirkton D1	I Anderson, Hardens Farm, Duns, Berwickshire

### P W & D S Hedley – RICCATON

£2,400	2382/F1	Hewgill E10	W Linton, Burnside Cottage, Woodend Farm, Wandel, Abington
£1,150	2382/F2	Hewgill E10	Floors Farming, Roxburghe Estates Office, Kelso
£1,200	2382/F3	Hewgill E10	Burncastle Farming Co Ltd, Burncastle Farm, Lauder, Berwickshire
£1,200	2382/F4	Midlock C2	M/s Walker, Cammerlaws, Weststruther, Gordon, Berwickshire

### J N Raeburn – KILBURN

£1,000	4231/F6	Firth D11	Ruthven Farms, Kirkmichael, Ballindalloch, Banffshire
--------	---------	-----------	---

### A W Frame – HAININGHEAD

£1,000	4144/F2	Riddings D6	R J Fallows & Sons, Burnton Farm, New Cumnock, Ayrshire
--------	---------	-------------	---

### A Ainslie – LINKSHEAD

£1,000	4045/F2	Ty-Gwyn E3	Mr Watt, Hillhead Farm, Gargunnock, Stirling
--------	---------	------------	--

### J Warnock & Son – DREVA

£2,200	1621/F10	Mereoak B3	C Mitchell, Mains Of Larg Farm, New Luce, Newton Stewart
£1,800	1621/F7	Midlock C21	J Warnock & Son, Eastfield Farm, Coulter, Biggar
£2,100	1621/F5	Newbigging Walls D3	R Flintoff, Sourhope Farm, Yetholm, Kelso
£1,300	1621/F8	Midlock Y26	D R Woodburn, 57 Creevamoy Road, Ballymena, Northern Ireland

### D L J & J Graham – BURNBANK

£1,050	4072/F1	S P Dalpeddar E5	R & N Barclay, Harestone Farm, South Road, Inch, Aberdeenshire
£1,500	4072/F15	S P Dalpeddar E5	J M Cullens, Dollarbank, Dollar, Clackmannanshire

### A C Campbell – DRIMSYNIE

£1,400	4307/F10	Oakhouse B13	Hartside Farms, Lamington, Biggar, Lanarkshire
--------	----------	--------------	--

### A Minto & Son – TOWN HEAD FARM

£2,500	4483/F4	Midlock D2	J & A Galloway Ltd, Lochlyoch Farm, Carmichael, Biggar
£1,000	4483/F7	Midlock D2	W Gray, Drumnessie Farm, Banton, Kilsyth
£1,100	4483/F2	Midlock D2	R C M Donnan & Son, Knockiebae Farm, New Luce, Newton Stewart
£2,000	4483/F19	Midlock D3	J A McGarva, Nether Abington, Abington, Biggar

### M R Thornbarrow – DAWYCK

£1,500	4346/F1	Midlock D3	R & N Barclay, Harestone Farm, South Road, Inch, Aberdeenshire
£1,300	4346/F8	Midlock D2	J McCalmont, 31 Drumcrow Road, Deerpark Farms, Glenarn
£1,000	4346/F23	Dawyck E10	Lauderhill Sheep Co, Lauderhill Farm, Lauder, Berwickshire



**J & W Bell – COTTAGE**

£4,000	3331/F21	Hewgill E4	E Fairburn & Sons, Marriforth, Thornton Steward, Ripon, Yorkshire
£1,800	3331/F10	Cottage D13	J Warnock & Sons, Dreva Farm, Broughton, Biggar
£2,100	3331/F1	Orra View E1	D Birkett & Son, West Park, Baldersdale, Barnard Castle

**R A McClymont & Son – KIRKSTEAD**

£2,000	2625/F1	Shrewbridge D17	R M Adam & Son, Newhouse of Glamis, By Forfar, Angus
£1,700	2625/F2	Shrewbridge D17	R & H Braid, Leithenhall Farm, Wamphray, Moffat, Dumfriesshire
£1,900	2625/F4	Shrewbridge D17	W M Fotheringham & Son, Craighall Farm, Forgandenny, Perth
£1,100	2625/F19	Shrewbridge D17	J J & D M Ferguson, Kerry Cottage, East Tullyfergus, Blairgowrie, Perthshire
£1,000	2625/F15	Shewbridge D17	Raehills Farms Ltd, c/o Annandale Estate Office, St Anns, Lockerbie

**J Wight & Sons – MIDLOCK**

£2,000	1538/F63	Bull & Cave E1	M/s Stewart, Crookboat Farm, Sandilands, Lanark
£2,300	1538/F62	Barf House E1	K M & S M Sayer, Scotland Farm, Snilesworth, Hawnby, North Yorkshire
£3,600	1538/F37	Midlock D40	W & R Kerr & Son, Sauchrie Mains Farm, Maybole, Ayrshire
£2,000	1538/F35	Midlock D40	J W Dent & Sons, Naby View, Lartington, Barnard Castle, Co Durham
£2,000	1538/F36	Midlock D40	J W Dent & Sons, Naby View, Lartington, Barnard Castle, Co Durham
£1,100	1538/F61	Blanavaid E4	D B Fleming, The Cottage, Nisbet, Coultter, Biggar
£1,900	1538/F64	Newbigging Walls D3	L McEldowney, 39 Slaughtneil Road, Maghera, Co Derry, N Ireland
£2,000	1538/F29	Midlock E25	M J & S M Wallace & Son, Lane Head Farm, Barnard Castle, Co Durham
£1,700	1538/F43	Tanhouse Farm B4	P Smith & Son, Cloverhill Farm, Broughton, Biggar

**I Sharp – NEWBIGGING WALLS**

£1,800	1645/F3	Midlock C2	A K Brooke, Carscreugh Farm, Glenluce, Newton Stewart, Wigtownshire
£1,700	1645/F1	Midlock C2	J McDougal, Bassendean Farm, Gordon, Berwickshire
£1,800	1645/F8	Midlock C2	J M Cullens, Dollarbank, Dollar, Clackmannanshire
£1,500	1645/F15	Ty-Gwyn D7	Burncastle Farming Co Ltd, Burncastle, Lauder, Berwickshire

**Firm of J Dykes – MENDICK**

£1,800	2882/F1	Red Cottage D3	S & M Ross, The Arr, Lethen, Nairn, Invernesshire
£1,000	2882/F2	Red Cottage D3	J W Hogg, Longyester Farm, Gifford, Haddington, East Lothian
£1,300	2882/F3	Red Cottage D3	M & S Wilson & Sons, Newbank Farm, Beattock, Moffat, Dumfriesshire
£1,450	2882/F6	Red Cottage D3	Floors Farming, Roxburghe Estates Office, Kelso
£1,200	2882/F8	Red Cottage D3	Raehills Farms Ltd, c/o Annandale Estate Office, St Anns, Lockerbie
£1,050	2882/F14	Cocklaw D7	Floors Farming, Roxburghe Estates Office, Kelso
£1,000	2882/F15	Cocklaw D7	H L Stewart, Drumaghiinier Farm, Blackwaterfoot, Isle Of Arran
£1,100	2882/F19	Cocklaw D7	G MacKenzie, Broomhill Farm, Muir Of Ord, Ross Shire
£1,100	2882/F20	Cocklaw D7	Firm Of R & L Howat, Kinnaird Farm, Dairsie, Cupar

**A McArthur – CRETLEVANE**

£1,800	3055/F8	Wellan E6	J Struthers, Gribloch Farm, Kippen, Stirling
£1,000	3055/F9	Wellan E6	A D & M Craig, Walton Park Farm, Corsock Road, Castle Douglas
£1,000	3055/F5	Wellan E6	J Craig, Rankinston Farm, Rankinston, Ayr

**J & J Cunningham – PARKGATESTONE**

£2,900	1386/F1	S P Dalpeddar D5	J E & S J L James, Neuadd-Blaenduhonw, Maesmyrnys, Builth Wells
£1,400	1386/F6	S P Dalpeddar D5	The Duke of Montrose, Gartincaber, Drymen, Glasgow
£1,000	1386/F10	S P Dalpeddar D5	P A Junor, Ballagan, Dores, Inverness

**C Campbell – HAPPREW**

£3,800	4370/F1	Firth D11	Hartside Farms, Hartside Farm, Lamington, Biggar, Lanarkshire
			M Thornborrow, Easter Dawyck Farm, Stobo, Peebles
£1,000	4370/F5	Town Head Farm E5	A D & M Craig, Walton Park Farm, Corsock Road, Castle Douglas
£2,300	4370/F4	Firth D11	J Guild, Ashmark Farm, New Cumnock, Ayrshire

**G McDonald – MID AUCHENGRAY**

£2,600	2942/F2	Riddings D6	R J Fallows & Sons, Burnton Farm, New Cumnock, Ayrshire
£2,500	2942/F1	Riddings D6	R J Fallows & Sons, Burnton Farm, New Cumnock, Ayrshire

**S Park & E Mills – S P DALPEDDAR**

£2,300	2690/F15	S P Dalpeddar E4	W J Douglas & Son, Upper Hindhope Farm, Jedburgh, Roxburghshire
£3,600	2690/F3	S P Dalpeddar D5	D J Abberley, Cwmlliw, Trallong, Brecon, Powys
£1,000	2690/F11	S P Dalpeddar E5	J A Junor, The Dell, Farr, Inverness
£1,100	2690/F7	S P Dalpeddar D5	J A Junor, The Dell, Farr, Inverness

**R Struthers – GLENELG GREENFIELD**

£1,200	1567/F2	Midlock D47	J F Rorison, Dallowie Farm, Patna, Ayrshire
£1,000	1567/F12	Bank Farm B23	A Stugess, Cullinaw Farm, Castle Douglas

**S McClymont & Son – AULD TINNIS**

£1,500	4391/F3	Blarnavaid E2	W & J Young, South Quintinespie, Laurieston, Castle Douglas
£1,600	4391/F4	Blarnavaid E2	T Wray, 72A Slane Road, Camlough, Co Antrim, Northern Ireland
£1,600	4391/F2	Blarnavaid E2	A J Robb, Townhead, Stirling



£1,200	4391/F16	Auld Tinnis E1	Lauderhill Sheep Co, Lauderhill Farm, Lauder, Berwickshire
£1,700	4391/F15	Auld Tinnis E1	R W & K Telford, Branton Eastside, Northumberland
£1,000	4391/F14	Auld Tinnis E1	Lauderhill Sheep Co, Lauderhill Farm, Lauder, Berwickshire

#### C & D Hall – FIRTH

£1,000	1574/F22	Hewgill E1	A K Brooke, Carscreugh Farm, Glenluce, Newton Stewart, Wigtownshire
£6,000	1574/F23	Hewgill E1	J Kay & Sons, Hartside Farm, Oxton, Lauder, Berwickshire
£2,000	1574/F20	Hewgill E1	J Pringle, 17 Whitepark Drive, Castle Douglas, Dumfries
£1,200	1574/F21	Hewgill E1	Burncastle Farming Co Ltd, Burncastle Farm, Lauder, Berwickshire
£1,600	1574/F43	Longcroft D3	A S & W Lockhart, Culdoach Farm, Tongland, Kirkcudbright
£2,800	1574/F40	Longcroft D3	D R Woodburn, 57 Creevamoy Road, Broshane, Ballymena, Northern Ireland
£1,600	1574/F11	Hewgill E1	A S & W Lockhart, Culdoach Farm, Tongland, Kirkcudbright
£2,600	1574/F27	Tanhouse Farm B4	J R D & J A Short, Ouston Farm, Whitfield, Hexham, Northumberland
£1,600	1574/F14	Hewgill E1	W S Robson & Co, Yatesfield Farm, Otterburn, Newcastle Upon Tyne
£1,400	1574/F47	Dunbrach E1	M Rorison, Clonrae, Tynron, Thornhill, Dumfries
£2,300	1574/F26	Midlock B60	Burncastle Farming Co Ltd, Burncastle Farm, Lauder, Berwickshire
£1,300	1574/F15	Hewgill E1	A R Mundell & Son, Lawesknowe Farm, Auchencastle, Moffat
£1,200	1574/F19	Hewgill E1	J W Dent & Sons, Naby View, Lartington, Barnard Castle, Co Durham

#### A Clark & Sons – NEWMILLS

£1,000	975/F6	Midlock C12	G D Herdman, Edlingham Demesne, Alnwick, Northumberland
--------	--------	-------------	---

#### T Dick & Son – HAMILDEAN

£1,400	4348/F12	Hamildean E1	Burncastle Farming Co Ltd, Burncastle Farm, Lauder, Berwickshire
£1,800	4348/F1	Ty-Gwyn E5	J C Thorpe, Blackburn Farm, Coyle, Hawes, North Yorkshire
£1,300	4348/F14	Hamildean E1	J A Junor, The Dell, Farr, Inverness
£1,000	4348/F11	Hamildean E5	Mulholland Contracts Ltd, Ettrickshaws Farm, Ettrickbridge, Selkirk

#### T W Hamilton & Son – KIRKTON

£1,200	1414/F2	Kirkton E1	J & A Galloway Ltd, Lochlyoch Farm, Carmichael, Biggar
£1,000	1414/F1	Kirkton E1	McRae Bros, Coulshill Farm, Auchterarder, Perthshire

#### Mrs S M Napier – BURNHEAD

£4,200	1728/F3	Midlock D52	S McClymont & Son, Tinnis Farm, Yarrow, Selkirk
£1,000	1728/F8	Sealhouses B15	Firm Of Mailingsland Farm, Mailingsland, Peebles

#### G Smith & Sons – WEST BOLTON

£1,000	125/F1	Middle Dukesfield D3	S R U C, SAC Farms Office, Easter Howgate Farm, Penicuik
£1,100	125/F3	Middle Dukesfield D3	M Aynsley & Son, The Lee, Longframlington, Morpeth
£1,600	125/F4	Teviot B10	M Aynsley & Son, The Lee, Longframlington, Morpeth
£1,050	125/F8	Middle Dukesfield D3	S R U C, SAC Farms Office, Easter Howgate Farm, Penicuik
£1,100	125/F9	Teviot B10	A R Bell & Son, South Charlton, Alnwick, Northumberland
£1,100	125/F14	Teviot B10	T J C Bradbury, Satchells Farm, Lillies Lea, Melrose
£1,850	125/F25	Teviot B10	Mossermains Farms, Mossermains, Mosser, Cockermouth
£1,050	125/F17	Middle Dukesfield D3	Percy Farm, Emblehope, Alnwick, Northumberland
£1,000	125/F18	Middle Dukesfield D3	M Aynsley & Son, The Lee, Longframlington, Morpeth
£1,000	125/F19	Middle Dukesfield D3	H Cockburn & Partners, Kingside, Leadburn, Peebles, Peebleshire
£1,200	125/F20	Middle Dukesfield D3	M Aynsley & Son, The Lee, Longframlington, Morpeth
£1,050	125/F22	Middle Dukesfield D3	Glenkiln Farm Partnership, c/o G Somerville, Bettyknowes, Dumfries
£1,200	125/F24	Middle Dukesfield D3	W W & I L McQuat & Son, Brockhouse, Fountainhall, Galashiels
£1,100	125/F26	Teviot B10	P M & A C Gordon, Northfield, St Abbs, Berwick-Upon-Tweed
£1,050	125/F27	Teviot B10	T J C Bradbury, Satchells Farm, Lillies Lea, Melrose

#### W & P F Walton – PENPEUGH

£1,400	3943/F3	Melkridge D1	H M Swallow & Son, Melkridge Farm, Haltwistle, Northumberland
--------	---------	--------------	---

#### T L Forster & Son – LOWES FELL

£1,350	50/F11	Street E1	R L Riddle & Son, Blakelaw, Bellingham, Hexham, Northumberland
£1,500	50/F1	Lowes Fell D1	J McConnachie & Son, Mossyard, Gate House Of Fleet

#### Lilburn Farming Partnership – ROSEDEN

£1,000	4260/F22	Craig Yr Orsedd D2	Percy Farm, Emblehope, Alnwick, Northumberland
£1,050	4260/F13	Clennell A9	Glenkiln Farm Partnership, c/o G Somerville, Bettyknowes, Dumfries
£1,400	4260/F10	Clennell A9	R W Gray, Great Ryle, Whittingham, Alnwick

#### C R Purvis – YEAVINGER

£1,000	1792/F2	Mendick D15	A W Hepburne, Scott Harden, Hawick
--------	---------	-------------	------------------------------------

#### R D Archer & Son – CARRY HOUSE

£1,000	281/F19	Whiteside D5	M Workman, Deerpark Road, Larne, Co Antrim, Northern Ireland
£1,050	281/F30	Carry House E23	M Workman, Deerpark Road, Larne, Co Antrim, Northern Ireland

#### G P Williams & Co – ELIAN

£1,250	2832/F10	Lowes Fell B1	C W Armstrong, North Charlton, Chathill, Northumberland
--------	----------	---------------	---





**J Hunter & Sons – STEEL**

£1,700	3565/F1	Midlock C7	J A Junor, Dell Farm, Farr, Inverness
--------	---------	------------	---------------------------------------

**I D Brown & Sons – TITLINGTON MOUNT**

£1,000	294/F9	Craig Yr Orsedd E13	Glenkiln Farm Partnership, c/o G Somerville, Bettyknowes, Dumfries
--------	--------	---------------------	--

**M J Snaith – CLENNELL**

£1,200	3989/F28	Old Hemley A5 E+	Mr Kellas, Raws Farm, Auchidoun, Keith
£1,250	3989/F15	Old Hemley A5 E+	Mr Kellas, Raws Farm, Auchidoun, Keith

**A G & D Bisset – MIDDLE DUKESFIELD**

£1,000	2423/F1	Ashes E8	W Walton & Sons, Dunns Houses, Otterburn, Newcastle-Upon-Tyne
--------	---------	----------	---

**J Herdman – EDLINGHAM**

£1,500	175/F2	Midlock C2	C A & J Watmore, Holystone Estate, Low Farnham, Sharperton, Morpeth
£1,000	175/F3	Midlock C2	C A & J Watmore, Holystone Estate, Low Farnham, Sharperton, Morpeth
£1,300	175/F10	Dreva D10	G D Herdman, Edlingham Demesne, Edlingham, Alnwick, Northumberland
£1,800	175/F4	Midlock C2	J L Walker & Co, Tower Farm, Sanquhar
£1,100	175/F8	Hewgill E10	Burncastle Farming Co, Burncastle, Lauder, Berwick
£1,000	175/F6	Midlock C2	J Pritchard, Evistones Farm, Rochester, Newcastle-Upon-Tyne

**G Dixon – ALWINTON**

£1,000	3764/F16	Ty-Gwyn D7	Gaich Farms, Grantown-On-Spey, Morayshire
--------	----------	------------	---

**Mr & Mrs K Gray – GEFRIN**

£1,050	4076/F1	Cendy E1	D & I Hall & Son, West End, Kirkbrampton, Carlisle, Cumbria
--------	---------	----------	---

**J Browell & Sons – QUARRY HOUSE**

£1,700	1653/F9	Ty-Gwyn D5	Burncastle Farming Co, Burncastle, Lauder, Berwick
£1,050	1653/F3	Ty-Gwyn D5	G H Walton & Sons, Greyside Farm, Fourstones, Hexham, Northumberland
£1,050	1653/F26	Firth C13	Luss Estates, Arnburn, Arden, Alexandria, Dumbartonshire
£1,100	1653/F19	Edlingham D5	T Byerley & Son, Birtleyshield, Wark, Hexham, Northumberland

**M & N Gray – ESLEY**

£1,400	4024/F3	Esley D1	A Wright, West Lundie, Argaty Doune
--------	---------	----------	-------------------------------------

**S J Crozier – WATERSYKE**

£1,000	2399/F8	Cassington D14	F T Walton, Flotterton, Thropton, Morpeth, Northumberland
--------	---------	----------------	---

**Ram Lambs****A C Campbell – DRIMSYNIE**

£1,400	4307/G9	Hewgill E4	D Birkett & Son, West Park, Baldersdale, Barnard Castle
--------	---------	------------	---

**M R Thornbarrow – DAWYCK**

£1,600	4346/G3	Penhill F10	S H Bates, Nilston Rigg, Langley, Hexham, Northumberland
--------	---------	-------------	--

**J Wight & Sons – MIDLOCK**

£8,500	1538/G29 (Champ.)	Midlock E27	Crow Hall Farms Ltd, Bardon Mill, Hexham, Northumberland
£1,000	1538/G11	Hewgill E1	Wanwood Partners, Wanwood Hill Farm, Alston, Cumbria
£1,000	1538/G12	Hewgill E1	R C & R S Burniston, Little Givendale, Ripon, North Yorkshire
£2,600	1538/G59	Barf House E1	G & M Morrison, 97 Crosswood Terrace, West Calder, West Lothian

**G McDonald – MID AUCHENGRAY**

£1,900	2942/G19	Cottage F15	J P Campbell & Sons, Glenrath Farm, Kirkton Manor, Peebles
--------	----------	-------------	--

**Longtown – 17/09/2014 - Ram Lambs**

**J Wight & Sons – MIDLOCK**

£3,500	1538/G30	Midlock F27	G E Carter & Son, Forget Me Not, Blackford, Carlisle, Cumbria
£1,100	1538/G60	Barf House E1	G E Carter & Son, Forget Me Not, Blackford, Carlisle, Cumbria

**Mosser Mains Farm – MOSSER MAINS**

£900	365/G1 (Champ.)	Red Cottage E1	Lilburn Farms, North Middleton, Wooler, Northumberland
------	-----------------	----------------	--

**Ballymena – 20/09/2014 - Shearlings**

**M Elliott – BALLYKNOCK VIEW**

£1,627.50	3355/F1	Nunsclough D5	D McHenry, 88 Torr Road, Ballycastle, Co Antrim, Northern Ireland
-----------	---------	---------------	---

**R Loughridge – ORRAVALE**

£1,837.50	1691/F4	Firth D1	O Loughran, Dunnamore, Cookstown, Co Tyrone, Northern Ireland
£1,050	1691/F5	Firth D1	M McCullough, 20 Carlack Hill, Swatragh, Maghera, Co Londonderry
£1,260	1691/F6	Firth D1	J Scahill, Prospect, Westport, Co Mayo
£1,365	1691/F7	Firth D1	B Moss, 82 Scraghey Road, Castlederg, Co Tyrone, Northern Ireland



£1,050	1691/F26	Lakethwaite D3	A Cooke, 53 Killymore Road, Newtonstewart, Co Tyrone, Northern Ireland
£1,627.50	1691/F9	Firth D1	O Loughran, Dunnamore, Cookstown, Co Tyrone, Northern Ireland
£2,100	1691/F13	Firth D1	J McNeil, 159 Torr Road, Cushendun, Ballymena, Northern Ireland
<b>J Adams &amp; Sons – HOLMVIEW</b>			
£1,281	1337/F18	Blairmont D4	B Cassidy, 32 Slaughtneill Road, Maghera, Co Londonderry, Northern Ireland
<b>R Mulligan – BRAGUE</b>			
£1,522.50	1244/F6	Maskview E5	J Wauchob, 38 Baronscourt Road, Newtonstewart, Co Tyrone, Northern Ireland
<b>C McGill – SLANE BURN</b>			
£1,029	4268/F16	Crawfordsland E1	M Workman, 97 Deepark Road, Kilwaughter, Larne, Co Antrim, Northern Ireland
£1,155	4268/F4	Crawfordsland E1	A Hunter, 41 Whitehill Road, Carnlough, Ballymena Co Antrim, Northern Ireland
<b>T Wray – KNOCKSTAKEN</b>			
£1,365	3790/F1	Orravale B10	A Butler, 34 Glenmakeeran Road, Ballycastle, Co Antrim, Northern Ireland
£2,625	3790/F2	Orravale B10	R Taggart, 73 Dickeystown Road, Glenarm, Ballymena, Co Antrim, N. Ireland
£1,522.50	3790/F3	Orravale B10	Southern Ireland customer
£1,417.50	3790/F14	Cairn Smiddy B1	D McHenry, 88 Torr Road, Ballycastle, Co Antrim, Northern Ireland
£1,522.50	3790/F15	Cairn Smiddy B1	J McNeill, 159 Torr Road, Cushendun, Ballymena, Northern Ireland
£1,050	3920/F6	Tievebaile Farm E12	H Duncan, 24 Lough Road, Loughgiel, Co Antrim, Northern Ireland
£1,155	3790/F5	Orravale B10	J Stewart, 77 Millvale Road, Derryneil, Castlewellsan, Co Down, Northern Ireland
£1,050	3790/F16	Cairn Smiddy B1	D McCloskey, 16 Killew Road, Dungiven
£1,102.50	3790/F17	Cairn Smiddy B1	P Gallen, 60 Scraghey Road, Castlederg, Co Tyrone, Northern Ireland
£1,102.50	3790/F18	Cairn Smiddy B1	G McAuley, 6 Ardymagh Road, Ballynashee, Ballyclare, Co Antrim, N. Ireland
<b>G &amp; J Loughery – TEMAIN</b>			
£1,837.50	4342/F12	Temain C1	P Gallen, 60 Scraghey Road, Castlederg, Co Tyrone, Northern Ireland
£1,470	4342/F6	Riddings E2	M Workman, 97 Deepark Road, Kilwaughter, Larne, Co Antrim, N. Ireland
£1,207.50	4342/F8	Temain E16	M Burke, 1 Plantation Road, Claudy, Co Londonderry, Northern Ireland
£1,312.50	4342/F16	Midlock C14	M Workman, 97 Deepark Road, Kilwaughter, Larne, Co Antrim, N. Ireland
£1,575	4342/F10	Temain E16	B Moss, 82 Scraghey Road, Castlederg, Co Tyrone, Northern Ireland
£1,386	4342/F4	Riddings E2	M Gingles, 40 Starbog Road, Kilwaughter, Larne, Co Antrim, Northern Ireland
£1,155	4342/F5	Riddings E2	J & O Cawley, Derryribbeen, Clogher, Westport, Co Mayo
£1,155	4342/F15	Midlock C14	R Kennedy, 59 Budore Road, Dundrod, Crumlin, Co Antrim, Northern Ireland
<b>Ram Lambs</b>			
<b>A &amp; D McKillop – GIANTS CAUSEWAY</b>			
£1,995	4456/G1	Ty-Gwyn A1	M Wright, 61 Slane Road, Carnlough, Ballymena, Co Antrim, Northern Ireland
<b>J Blaney – TIEVEBUAILE FARM</b>			
£1,050	3920/G2	Hewgill E21	C McGill, 10 Loughdoo Road, Larne, Co Antrim, Northern Ireland
<b>R &amp; J Graham – TULLYVALLEN</b>			
£1,260	3417/G1 (Champ.)	Hundith Z4	K Park & Sons, Dalpeddar, Sanquhar, Dumfries
<b>R Loughridge – ORRAVALE</b>			
£2,415	1691/G1	Firth D1	J & A Brown, Macqueston, Tynron, Thornhill, Dumfries
<b>J Harkin – J &amp; S</b>			
£1,050	3552/G1	Glenane F4	D Campbell, 27 Castledamp Road, Plumbridge, Co Tyrone, Northern Ireland
<b>D McCrystal – DRUMMUCK</b>			
£1,365	4367/G1	Bull & Cave E1	B Blaney, 9 Lower Cloughs, Cushendall, Ballymena, Co Antrim, Northern Ireland
£2,100	4367/G2	Bull & Cave E1	H Crawford, 12 Glenview Road, Glenarm, Ballymena, Northern Ireland
£1,207.50	4367/G5	Midlock F32	R Black, 29 Moorlough Road, Artigarven, Strabane
<b>G &amp; J Loughery – TEMAIN</b>			
£1,470	4342/G1	Cottage F1	M Kelly, 48 Freehall Road, Limavady

## **Builth Wells – 22/09/2014 - Aged Rams & Shearlings**

<b>A G &amp; D Bisset – MIDDLE DUKESFIELD</b>			
£1,050	3059/D11	Middle Dukesfield C6	A E Jones, Ynystoddeb, Gwynfe, Llangadog
<b>Miss D Williams – DAISY</b>			
£1,155	4395/F8	Craig Yr Orsedd E15	R W & C S Richards, Park Farm, Craswell, Hereford
£1,155	4395/F2	Westow B6 E+	D G Pugh & Co, Birches, Lliidiartywaun, Llanidloes
<b>D P May – DERWENLAS</b>			
£1,155	3822/F30	Cernyw C15	D G Pugh & Co, Birches, Lliidiartywaun, Llanidloes
<b>E G J Powell – CAEBANAL</b>			
£1,102.50	4361/F4	Cernyw D28	J T & J E Lloyd, Corner Farm, Llangunllo, Knighton, Powys
£1,102.50	2963/F32	Craig Yr Orsedd D3	M & A Powell, Drefor, Kerry Newtown, Powys



**I & W Jones – UNDERWOOD**

£1,050	1982/F18	Wellan C25	Bank House Farm Partnership, Bank House, Stoke St Millborough, Ludlow
--------	----------	------------	---

**J Cadwallader – CAEMEIRIOL**

£1,155	3315/F1	Old Hemley C10	J R Lewis & Co, Fferam, Llanddewi, Llandrindod Wells
£1,260	3315/F8	Caemeiriol D14	D W Davies, Pensingrug, Cellan, Lampeter

**G Dixon – ALWINTON**

£1,680	3764/F40	Parton D19	E Milburn & Sons, Holling Hill, Netherwitton, Morpeth, Northumberland
£1,050	3764/F43	Parton D19	G Smith & Sons, West Bolton, Alnwick, Northumberland

**G Howatson – TUDNO**

£1,029	4408/F8	Derwenlas E13	E H Anwyl, Rhosgoch, Staylittle, Llanbrynmair, Powys
--------	---------	---------------	--

**G P Williams & Co – ELIAN**

£1,890	2832/F26	Lowes Fell B1	R J & S Rowe Farms Ltd, Horsen Farm, Simonsbath, Minehead, Somerset
£1,029	2832/F35	Carry House A1	A P Morgan, Bryn Haul, Llanfaircaereinion, Welshpool, Powys
£1,029	2832/F40	Carry House A1	R J & S Rowe Farms Ltd, Horsen Farm, Simonsbath, Minehead, Somerset
£1,732.50	2832/F16	Lowes Fell B1	R J & S Rowe Farms Ltd, Horsen Farm, Simonsbath, Minehead, Somerset
£1,207.50	2832/F36	Carry House A1	E H Owen, Blaen Y Cwm, Llandyrnog Road, Nannerch, Mold, Flintshire
£1,155	2832/F82	Wanstead C1	I A Davies, Gwardafolog, Pontsian, Llandysul, Ceredigion
£1,155	2832/F44	Carry House A1	E H Owen, Blaen Y Cwm, Llandyrnog Road, Nannerch, Mold, Flintshire
£1,050	2832/F6	Lowes Fell B1	K A Hughson & Partners, Ty Mawr, Newbridge On Wye, Llandrindod Wells
£1,029	2832/F70	Cassington D4	K A Hughson & Partners, Ty Mawr, Newbridge On Wye, Llandrindod Wells

**S A & R P Jones – CRAIG YR ORSEDD**

£1,470	3363/F25	Shrewbridge A26 E+	I Davies & Co, Dafadfa Uchaf, Gwynfe, Llangadog, Sir Gaerfyrddin
£1,050	3363/F23	Shrewbridge A26 E+	R L & A M Montague, Parkers Down, Highampton, Beaworthy, Devon
£1,029	3363/F27	Arkleby B1 E+	E H Owen, Blaen Y Cwm, Llandyrnog Road, Nannerch, Mold, Flintshire

**T E & D Jones – GWNNWS**

£1,050	2592/F2	Tyn-Y-Maen D3	G W Owen, Cwm Deri, Llanllwni, Llanybydder, Carmarthenshire
--------	---------	---------------	---

**G P Williams & Co – ELIAN**

£1,050	2832/F8	Lowes Fell B1	R L Richards, Park Farm, Craswall, Herefordshire
£1,260	2832/F45	Carry House A1	G Davies & Co, Pant Glas Isolation Unit, Trecastle, Brecon
£1,365	2832/F55	Carry House A1	E T Bound & Co, Tyn Y Maes, Llangurig, Llanidloes, Powys
£1,207.50	2832/F27	Lowes Fell B1	R J & S Rowe Farms Ltd, Horsen Farm, Simonsbath, Minehead, Somerset
£1,869	2832/F4	Lowes Fell B1	M A Collins, Worth Farm, Withypool, Minehead, Somerset
£1,575	2832/F80	Lochhill E1	M A Collins, Worth Farm, Withypool, Minehead, Somerset
£2,362.50	2832/F86	Wanstead C1	T E & D Jones, Penlan Gwnnws, Ystrad Meurig, Ceredigion
£1,155	2832/F49	Carry House A1	H G D & E A Powell, Llwyngwilym Farm, Rhayader, Powys

**Ram Lambs****S A & R P Jones – CRAIG YR ORSEDD**

£3,150	3363/G1	Arkleby B1 E+	M/s McClymont, Kirkstead, Yarrow, Selkirk
£2,100	3363/G2	Arkleby B1 E+	M Seed & Son, Home Farm, Auchry, Turrieff, Aberdeenshire

**G P Williams & Co – ELIAN**

£1,155	2832/G25	Addingham B1	M J Davies, Caerafon Farm, Caersws, Powys
--------	----------	--------------	---

**E Owen – CERNYW**

£1,470	1070/G16	Howlea D3	R G Jones & Sons, Robleston Hall, Camrose, Haverfordwest, Pembrokeshire
£1,155	1070/G14	Howlea D3	D I Edwards, Pentre, Llanarmon, Dyffryn, Ceiriog, Llangollen

**M Seed & Son – AUCHRY**

£2,572.50	4447/G6	Cassington D1 E+	R Lewis, Cwm Meudwy, Llandysul, Ceredigion
-----------	---------	------------------	--

**M C Roberts – MYFYRIAN**

£2,310	1183/G1 (Champ.)	Shrewbridge C2	Innovis Breeding Sheep, Peithyll, Crosswood, Aberystwyth
--------	------------------	----------------	--

**S A Thomason – PIEL VIEW**

£1,365	3935/G7	Kildalloig F17	R P Williams & Sons, The Down, Lydbury North, Shropshire
			T R Harris, Redlands Farm, Bonvilston, Cardiff
			P Howell, Fir Tree Farm, Westnor, Bishops Castle, Shropshire
£1,470	3935/G8	Kildalloig F17	M/s Codd & Lewis, Upper North Hill, Treffgarne, Haverfordwest

**Tavistock – 23/09/2014 - Shearling****L C Branfield – DANESBROOK**

£1,029	2223/F19	Yelland D3	P Alford, Cardwell Farm, Milton Abbot, Tavistock, Devon
--------	----------	------------	---

**Hexham – 24/09/2014 - Shearling****T L Forster & Son – LOWES FELL**

£1,150	50/F18 (Champ.)	Lowes Fell D1	Howard Farms, High Studdon, Allendale, Hexham, Northumberland
--------	-----------------	---------------	---



## Ruthin – 25/09/2014 - Shearling

**E Owen – CERNYW**

£756 1070/F30 (Champ.) Howlea D3

Robert Bros, Hengaer Isa, Glanrafon, Corwen

## Castle Douglas – 26/09/2014 - Shearlings

**R W Jardine – HARDLAND**

£1,000 2869/F3 Gragareth E3 Auchencairn Farms, Castle Douglas

**A & E Pollock – SHINNEL**

£1,050 2761/F7 Firth E10 R M Dunlop & Son, Pinvalley Farm, Barr, Girvan, Ayrshire

**J Park – FOREBRAE**

£1,100 3749/F10 Parkgatestone D1 Mr Carr, Airyolland, Port William, Newton Stewart  
 £1,000 3749/F11 Parkgatestone D1 A D & M Craig, Walton Park, Corsock Road, Castle Douglas  
 £1,500 3749/F19 Barley C1 A & A Kirkpatrick, Barr Farm, Sanquhar, Dumfriesshire  
 £1,000 3749/F12 Parkgatestone D1 W Murray, High Ersock Farm, Whithorn, Newton Stewart  
 £1,100 3749/F14 Parkgatestone D1 A Paton & Co, Craig, Straiton, Ayrshire

**J Pringle – STROANPATRICK**

£1,100 2933/F1 Quarry House E3 R M Dunlop & Son, Pinvalley Farm, Barr, Girvan, Ayrshire

**A Hamilton – MARR**

£1,000 3685/F7 Mid Knockglass D1 A D & M Craig, Walton Park, Corsock Road, Castle Douglas

**G W Kerr – SAUCHRIE MAINS**

£1,000 4301/F9 Midlock D4 R Wallace & Co, Mains Of Collin, Auchencairn, Castle Douglas

**H & S Hamilton – CAIRNSMIDDY**

£1,000 2637/F4 Duhonw E17 D G & J D Walker, Drumbuie, Sanquhar, Dumfriesshire  
 £1,000 2637/F7 Duhonw E17 D G & J D Walker, Drumbuie, Sanquhar, Dumfriesshire

**J Thomson – J & D BLUES**

£2,500 4046/F1 S P Dalpeddar E3 R J McTurk, Glenhowl, Kendoon, Dalry, Castle Douglas  
 £2,100 4046/F3 S P Dalpeddar E3 Mr McGillivray, West Bowhouse Farm, Falkirk  
 £1,100 4046/F2 S P Dalpeddar E3 Lowes Farming, Lowes, Corsock, Castle Douglas  
 £1,060 3749/F8 Forebrae E7 M/s Fraser & Son, Auchnarrow Farm, Glenlivet, Morayshire

**A & A Kirkpatrick – BARR**

£1,000 3654/F5 Duhonw D36 J & A Dunlop, Ashfield Farm, Maybole, Ayrshire

**S Mitchell – MAINS OF LARG**

£1,500 3725/F3 Forebrae D11 J & W Wilson, Kirkmabreck, Creetown, Newton Stewart  
 £1,100 3725/F4 Forebrae D11 W D Hyslop & Sons, Gowlands, Barrhill, Girvan, Ayrshire

**A Brown – MACQUESTON**

£1,400 2571/F11 Firth C13 R Loughridge, The Hill, 41 Friary Road, Armoy, Co Antrim  
 £1,600 2571/F27 Carry House E15 R Loughridge, The Hill, 41 Friary Road, Armoy, Co Antrim  
 £2,400 2571/F14 Firth C1 Mr McArthur, Arnicle, Glenbarr, Campbeltown, Argyll

**W Lockhart & Son – LAGGAN PARK**

£1,000 3768/F9 Wellan D26 W D Hyslop & Sons, Gowlands, Barrhill, Girvan, Ayrshire

**Ram Lambs**

**A Brown – MACQUESTON**

£1,600 2571/G1 Lunesdale F2 Mr Heads, Aitkenhead, Fenwick, Ayrshire  
 £1,700 2571/G15 Highberries C18 R M Dunlop & Son, Pinvalley Farm, Barr, Girvan, Ayrshire  
 £1,500 2571/G17 Macqueston F8 W F & H Logan, Maxwellston, Girvan, Ayrshire

**W Lockhart & Co – CULDOACH**

£3,000 4265/G1 Asby Hall E6 J O & R Struthers, Greenfield Farm, Cobbinshaw, West Calder  
 £1,000 4265/G2 Asby Hall E6 M/s Logan & Son, Brockloch, Cumnock, Ayrshire

**J Wight & Sons – MIDLOCK**

£1,800 1538/G53 Bull & Cave E1 A Bastian, Cairnhall, Auldgirth, Dumfries, Dumfriesshire  
 £5,000 1538/G31 Midlock F27 N C Marston, Millstone Moor Farm, Redmain, Cockermouth, Cumbria  
 £2,800 1538/G13 Hewgill E1 R C Woodburn & Son, Laidlawstiel, Clovenfords, Galashiels  
 £1,300 1538/G32 (Champ.) Midlock F27 A Caton, Otterburn Lodge, Bell Busk, Skipton, North Yorks.

**R W Jardine – HARDLAND**

£1,000 2869/G4 Hew Hartrigg F2 D Bryson, 1 Grassmillees Way, Mauchline, Ayrshire

**S Park & E Mills – S P DALPEDDAR**

£1,400 2690/G4 Old Hemley F1 Mr Dickson, Scalpsie Farm, Isle Of Bute  
 £1,000 2690/G5 Old Hemley F1 Mr Campbell, Shields Farm, Milton Of Campsie, Glasgow  
 £2,200 2690/G7 Old Hemley F1 D L & S Currie, Pinclanty, Pinmore, Girvan, Ayrshire



**J Pirie – BLARNAVAID**

£4,000	4244/G9	Firth F1	D A & M A Brown & Son, Agglethorpe, Leyburn, North Yorks.
--------	---------	----------	---

**R D McInnes & Co – MOSCOW**

£2,000	3875/G3	Midlock E25	J & J Cunningham, Parkgatestone, Biggar, Lanarkshire
--------	---------	-------------	--

**M James – DUHONW**

£1,000	1411/G6	Duhonw F1	J & J Cunningham, Parkgatestone, Biggar, Lanarkshire
--------	---------	-----------	--

## Hawes – 02/10/2014 - Shearlings

**R A Busby & Son – HARLAND**

£1,200	3551/F9	Todhills B1	R & E Cowperthwaite, Stockdale, Settle, North Yorkshire
--------	---------	-------------	---

**W C Porter & Son – RIDDINGS**

£1,800	752/F47	Midlock C3	J W Hall, Darnbrook Farm, Langcliffe, Settle, North Yorkshire
£1,900	752/F46	Midlock C3	R W Clarkson & Son, Low Whita Farm, Low Row, Richmond, North Yorkshire
£1,600	752/F17	Riddings E22	B Spence & Sons, East Scartop Farm, Thornton Rust, Leyburn, N. Yorkshire

**W A & A Booth – SMEARSETT**

£6,500	2968/F4	Shafthill C1	S Bell & Sons, Gill Gate, Askrigg, Leyburn, North Yorkshire
£6,200	2968/F29	Smearsett D17	R W & J H Emmott, Wythop Hall Farm, Wythop, Cockermouth, Cumbria
£3,200	2968/F8	Smearsett D15	P J Dixon, East House, Langleydale, Barnard Castle, Co Durham

**J & D Stenton – ST RAVENSCAR**

£1,000	2187/F25	Tanhouse Farm E1	H W & M A Alderson & Son, Howgill Grange, Baldersdale, Barnard Castle
--------	----------	------------------	---

**R Hargreaves – BARLEY**

£1,100	3374/F2	Lunesdale S1	K & H A Ridley, Knaresdale House, Slaggyford, Carlisle
£1,000	3374/F24	Smearsett E13	K & H A Ridley, Knaresdale House, Slaggyford, Carlisle

**J W Smith-Jackson- SHAFTHILL**

£7,000	1080/F9	Midlock E28	Crowhall Farms, Bardon Mill, Hexham, Northumberland
--------	---------	-------------	---

**E Fairburn & Sons – MARRIFORTH**

£1,700	746/F67	Lunesdale R8	M W Bousefield, Hegdale, Rossgill, Penrith, Cumbria
£1,300	746/F10	Smearsett E1	M/s Hodgson, Rydal, Ambleside, Cumbria
£1,100	746/F12	Midlock D41	J R & A Blades, Scarr House, Muker, Richmond, North Yorkshire
£1,100	746/F5	Smearsett E1	J E & E Dobson, White Kirkley Farm, Frosterley, Bishop Auckland, Co Durham
£1,600	746/F51	Midlock D41	Bank House Farms, The Estate Office, Cowan Bridge, Carnforth, Lancs
£1,000	746/F70	Marriforth E38	V Verity & Son, Whitmoor Farm, West End, Harrogate, North Yorkshire
£1,400	746/F31	Midlock D41	M MacLean, Wester Croachy, Aberarder, Inverness

**Ellis Brothers – ILKLEY MOOR**

£2,600	2041/F32	Bull & Cave D1	H Horsfield & Son, Sunnybank Farm, Foulridge, Lancashire
--------	----------	----------------	--

**J Wight & Sons – MIDLOCK**

£2,500	1538/F13	Hewgill C2	A & A Kirkpatrick, Barr Farm, Sanquhar, Dumfriesshire
£1,600	1538/F5	Hewgill E1	K J Burrow, Hacra Farm, Dent, Cumbria

**M Barker Farms – ELLERTON**

£1,600	1760/F1	Lunesdale C1	M G Tomlinson, Park Hill Farm, Muggington Lane End, Nr Ashbourne
£1,000	1760/F3	Lunesdale C1	T S & H J Park, Todgill Farm, Cowan Bridge, Carnforth, Lancs

**M/s Lawson & Sons – HUNDITH**

£1,300	292/F16	Midlock Y1	T G Taylor, Gilts Farm, Crosby Ravensworth, Penrith, Cumbria
--------	---------	------------	--

**S D Thompson – CHERRY TREE**

£2,200	4357/F1	Cherry Tree E1	J Sunter & Son, Nova Farm, Simonstone, Hawes, North Yorkshire
--------	---------	----------------	---

**J S Cloughton – BROWNA PADDOCKS**

£1,000	2514/F1	Blackburn B2	R W Clarkson & Son, Low Whita Farm, Low Row, Richmond, North Yorkshire
--------	---------	--------------	--

**G P Taylor – SWATHBURN**

£1,200	684/F10	Swathburn C6	C D & R F Kitching, Grisedale Farm, Threshfield, Skipton, North Yorkshire
£2,000	684/F11	Swathburn C8	J W Hall, Darnbrook Farm, Langcliffe, Settle, North Yorkshire

**Ram Lambs****W A & G R Sedgley – LANGSTROTH**

£7,000	3303/G1	Langstroth E7	A & K M Barnes, Cowden, Great Harwood, Lancs
£1,000	3303/G2	Langstroth E7	J S & D Cloughton, Carpley Green, Bainbridge, Leyburn, North Yorkshire
£1,400	3303/G3	Langstroth E7	I Parry, Llwynrhydill, Upper Chapel, Brecon, Powys
£2,000	3303/G4	Langstroth E7	Ellis Bros, Cragg House Farm, Addingham, Ilkley, West Yorkshire

**R D Archer & Son – CARRY HOUSE**

£3,000	281/G29	Oak House F1	T W & T B Edgar, Whitton Farm, Morebattle, Kelso
--------	---------	--------------	--



£3,200	281/G17	Carry House E23	W Lockhart & Son, Lagganpark, Moniaive, Thornhill, Dumfriesshire
£1,300	281/G1	Carry House C29	B D & M S Hope, Canonbie, Dumfries
£1,500	281/G3	Carry House C29	C H Robson, Dale House, Ninebanks, Hexham, Northumberland
£1,200	281/G4	Carry House C29	T W & T B Edgar, Whitton Farm, Morebattle, Kelso
			R Jardine & Son, Upper Hardland, Balmaclellan, Castle Douglas
<b>S D Thompson – CHERRY TREE</b>			
£3,600	4357/G1	Cherry Tree E1	J J & E Lawson, Kirkland Green, Mealsgate, Carlisle, Cumbria
£2,200	4357/G2	Cherry Tree E7	M Bateman & Son, Moors Farm, Sedbergh, Cumbria
£1,000	4357/G3	Cherry Tree E1	J F & H E S Caton, Long Streets Farm, Cowan Bridge, Carnforth, Lancs
<b>J Thomas &amp; Son – TANHOUSE FARM</b>			
£1,000	3320/G1	Tanhouse Farm D1	P Douch, Nantyfallen, Cwrt Henri, Carmarthen
<b>R J D &amp; F J Wilson – LOW TIPALT</b>			
£9,000	2851/G1	Oak House F1	P L & J Dawson, Kentmere Hall, Kentmere, Kendal, Cumbria
£2,000	2851/G2	Oak House F1	R J & M J Bell & Son, Scarrowmanwick, Croglin, Cumbria
£3,400	2851/G4	Smearsett D15	C T & J E Willoughby, Wood End Farm, Redmire, Leyburn, North Yorkshire
<b>G P Taylor – SWATHBURN</b>			
£2,000	684/G1	Otterburn Lodge E1	W & M Buckle, Bleathgill, Barras, Kirkby Stephen, Cumbria
£1,000	684/G3	Hundith C2	F A & A Waugh, Kilnstown Farms Ltd, Bewcastle, Carlisle, Cumbria
<b>N Laing – GARSCUBE</b>			
£1,000	3161/G2	Lunesdale F2	E & M A Procter, Villa Farm, Great Musgrave, Kirkby Stephen, Cumbria
<b>J Caton – JUBILEE</b>			
£1,200	3736/G1	Blue Peaks F1	J Sunter & Sons, Raydale Grange, Askrigg, Leyburn, North Yorkshire
<b>N J &amp; L Allan – LAKETHWAITE</b>			
£1,200	3774/G1	New Hutton F3	A J & G H Bland, Hollingworth Hall Farm, Mottram, Hyde, Cheshire
<b>E Fairburn &amp; Sons – MARRIFORTH</b>			
£2,200	746/G1	Cottage F19	J Bell, Whelphill, Crawford, Biggar
£2,800	746/G22	Smearsett E1	H Harvey, Waxham Hall, Sea Palling, Norwich, Norfolk
£1,000	746/G14	Midlock D41	L & E Fowlie, Guise Of Tough, Alford, Aberdeenshire
£3,000	746/G2	Cottage F19	J Wight & Sons, Midlock, Crawford, Biggar, Lanarkshire
£8,000	746/G23	Smearsett E1	M/s Lord, Low Dowgill, North Stainmore, Kirkby Stephen, Cumbria
£4,200	746/G3	Cottage F19	A V Hamilton & Co, Marr, Thornhill, Dumfriesshire
£1,000	746/G15	Midlock D41	J B Fletcher, East Friar House, Newbiggin In Teesdale, Barnard Castle
£3,000	746/G4	Cottage F19	W Barrowman, Mid Knockglass, Stranraer
£2,000	746/G5	Cottage F19	J Lee & Sons, Agars Hill, Whitfield, Northumberland
£1,600	746/G24	Smearsett E1	M W & C M Ridley, Shitlington Hall, Wark, Hexham, Northumberland
£1,300	746/G27	Smearsett E1	W M Reed & Sons, Lands Farm, Westgate, Bishop Auckland, Co Durham
<b>J Smith-Jackson – SHAFTHILL</b>			
£1,100	1080/G8	Midlock E28	K Adams, Rudland Farm, Fadmoor York
£1,700	1080/G2	Shafthill C2	S Hallam, Grange Head Farm, Egton Bridge, Whitby, North Yorkshire
£1,000	1080/G14	Shafthill F9	K Adams, Rudland Farm, Fadmoor, York
<b>I &amp; P Brown – OAK HOUSE</b>			
£3,200	3777/G1	Hewgill D17	J Allison & Sons, Seal Houses, Arkengarthdale, Richmond, North Yorkshire
£1,600	3777/G2	Hewgill D17	D J & S Dixon, Hartley Castle, Hartley, Kirkby Stephen, Cumbria
<b>E G B Bulman – PHEASANT HILL</b>			
£1,400	4547/G1	Smearsett E1	J B & E J Peile Ltd, Greystoke Castle Farms, Greystoke, Penrith, Cumbria
£1,500	4547/G2	Smearsett E1	A Clark & Sons, Avisyard, Glenmuir Water Road, Cumnock, Ayrshire
£3,800	4547/G3	Smearsett E1	D & L Graham, Mains Of Burnbank, Blairdrummond, Stirling
£1,200	4547/G4	Smearsett E1	R MacKenzie & Sons, The Glebe Farm, Boat Of Garten, Aviemore
£1,200	4547/G5	Smearsett E1	J Shedden & Sons, Newfield Mains Farm, Dundonald, Ayrshire
<b>P Webster – MEREOAK</b>			
£1,000	3350/G1	Riddings F11	R C Wharton & Son, High Field Farm, Drybeck, Cumbria
£1,600	3350/G2	Old Hemley D7	W A & A Booth, Old Hall Cottage, Feizor, Lancs
<b>G Rawsthorne – LUNESDALE</b>			
£4,000	963/G1	Highberries B1	T Dick & Son, Hamildean, Peebles
£2,000	963/G3	Star Green M1	R Raine, Fogg Close, Kirkoswald, Near Penrith, Cumbria
£1,400	963/G4	Star Green M1	J Ions & Co, Garrett Lee, Longhorsley, Morpeth, Northumberland
<b>A Dixon &amp; Son – SELSIDE</b>			
£1,000	2982/G2	Selside E1	N C Marston, Millstone Moor Farm, Redmain, Cockermouth, Cumbria
<b>G &amp; H R Shields – SKEUGHDALE</b>			
£2,000	2881/G1	Hewgill F5	M/s Brass, Bridge End, Soulby, Kirkby Stephen, Cumbria
£1,100	2881/G2	Hewgill F5	R R & S Ridley, Tongue Hill, Hurst, Richmond, North Yorkshire
£1,100	2881/G3	Hewgill C6	M/s Raine & Davidson, Thorney Gale, Stainmore, Kirkby Stephen, Cumbria
£1,300	2881/G5	Hewgill C6	J S Cloughton, Browna Paddocks, Askrigg, Leyburn, North Yorkshire



**A J Mason – ODDACRES**

£3,400	678/G1	Low Tipalt E4	P Addyman & Son, Hagg Farm, Embsay, Skipton, North Yorkshire
£1,200	678/G2	Low Tipalt E4	W P Sutcliffe, Cragg Hill Farm, Horton In Ribblesdale, Settle, North Yorkshire
£1,400	678/G9	Redburn F1	M/s Hodgson, Rydal Farm, Ambleside, Cumbria
£1,300	678/G10	Redburn F1	M/s McKie, Finniness Farm, Castle Douglas

**W A & A Booth – SMEARSETT**

£7,000	2968/G1	Smearsett D15	W C Porter & Son, Riddings Farm, Reeth, Richmond, North Yorkshire
			K A Brown & Sons, Asby Hall, Great Asby, Appleby, Cumbria
			J J & E Lawson, Kirkland Green, Mealsgate, Carlisle, Cumbria
£1,400	2968/G2	Smearsett D15	B S Simpson, Spring House Farm, Heathfield, Harrogate, North Yorkshire
£4,000	2968/G7	Smearsett D17	R A Busby & Son, Harland House, Marrick, Richmond, North Yorkshire
			J F & J K Wilson, High House Farm, Blubberhouses, Near Otley
£8,500	2968/G10	Smearsett D17	D & V Hill, Whitewall, Great Asby, Appleby, Cumbria
£1,200	2968/G16	Gragareth E1	J R & A Blades, Scarr House, Muker, Richmond, North Yorkshire
£1,600	2968/G17	Gragareth E1	J Scarr & Sons, Coleby Hall, Askrigg, Leyburn, North Yorkshire
£2,000	2968/G18	Gragareth E1	J C Walker & Son, Brennand Farm, Dunsop Bridge, Clitheroe, Lancs
£2,000	2968/G21	Gragareth E1	C M Ryder, Scaife Hall, Blubberhouses, West Yorkshire
£1,500	2968/G22	Gragareth E1	A C & K Pye, Duckinshaw Farm, Abbeystead, Lancaster, Lancs
£2,800	2968/G13	Lunesdale W2	J & G Huck, Church Farm, Hubberholme, Skipton, North Yorkshire

**J Nelson & Son – BULL & CAVE**

£1,200	2944/G1	Hundith D1	M J & G Taylor, Scoutber End Farm, Rathmell, Settle, North Yorkshire
£1,200	2944/G2	Hundith D1	FBR Ltd, Gala Farm, Abbey Row, Kelso
£1,200	2944/G3	Bull & Cave E14	W Richardson & Son, Ghyll House, Dufton, Appleby, Cumbria
£1,200	2944/G5	Riddings F2	C & S Napier, Burnhead, Eddleston, Peebleshire
£1,900	2944/G7	Bull & Cave E14	H Macaskill, Woodhall Farm, Innerwick, Dunbar
£1,000	2944/G10	Bull & Cave E14	B W Hewitson, Shatton Lodge Farm, Cockermouth, Cumbria

**J Cartmell – RED HOWE**

£2,400	4416/G1	Highberries E2	K & H A Ridley, Knaresdale House, Slaggyford, Carlisle
--------	---------	----------------	--

**N White – BARF HOUSE**

£1,200	1432/G1	Midlock E26	S H Sutcliffe & Son, 2 Hill Side, Horton In Ribblesdale, North Yorkshire
			J Caton, Settle, North Yorkshire
£1,400	1432/G3	Midlock E26	W P Sutcliffe, Cragg Hill Farm, Horton In Ribblesdale, Settle, North Yorkshire

**J & W Bell – COTTAGE**

£8,000	3331/G1	Hewgill E4	G Loughery, 116 Terrydoo Road, Limavady, Co Londonderry, N. Ireland
£2,400	3331/G2	Hewgill E4	W Morton & Son, Grennan, Penpont, Thornhill, Dumfries
£3,500	3331/G3	Shafthill C1	J C Walker & Son, Brennand Farm, Dunsop Bridge, Clitheroe, Lancs
			G W Whitwell Ltd, Lanshaw Farm, Austwick, Lancs
£2,000	3331/G5	Cottage F21	Benson Wemys Farms, Estate Office, Longniddry, East Lothian
£1,900	3331/G6	Highberries C18	R & R Gornall, Croft House, Dent, Sedbergh, Cumbria
£1,000	3331/G8	Hewgill E4	Devonport Farms, Blakelaw Farm, West Wood Burn, Hexham, Northumberland
£1,000	3331/G9	Hewgill E4	M/s Rochester & Murray, Glebe Farm, West Butsfield, Tow Law
£1,600	3331/G10	Hewgill E4	M A Crocker, Town End Farm, Johnby, Greystone, Penrith
£1,150	3331/G12	Hewgill E4	T H Vickers & Sons, Thornley Hall, Towlaw, Bishop Auckland

**W H & D A Gass – NUNSCLEUGH**

£3,800	408/G1	Nunsleugh D26	C & D Hall, Lilyburn Farm, Penicuik, Midlothian
			J Wight & Sons, Midlock, Crawford, Biggar, Lanarkshire

**S Park & E Mills – S P DALPEDDAR**

£3,600	2690/G1	Old Hemley F1	W & R Kerr & Son, Sauchrie Mains, Maybole, Ayrshire
£2,500	2690/G15	S P Dalpeddar F3	C M & J Stott, Laund Farm, Chipping, Preston, Lancs
£3,500	2690/G2	Old Hemley F1	J C Walker & Son, Brennand Farm, Dunsop Bridge, Clitheroe, Lancs
			J C & E Pedley & Son, Yore House, Lunds, Sedbergh, Cumbria
£1,000	2690/G43	J & D Blues F1	S Watkins, Cammen Uchaf, Llanfihangel, Llanfyllin, Powys
£1,900	2690/G16	S P Dalpeddar F3	M/s Mycock & Bright, Blake Edge Farm, Buxton, Derbyshire
£1,900	2690/G3	Old Hemley F1	N H & M J Cole, Green Well Farm, Yelverton

**S A Fawcett – HIRDS HILL**

£1,500	4463/G9	Dalehead Y9	D A & M A Brown & Son, Agglethorpe, Leyburn, North Yorks
--------	---------	-------------	--

**S J Lavery – ORRA VIEW**

£2,000	3100/G1	Orra View F1	G A & B B Ainslie, Linkshead Farm, Co Path, Berwickshire
£1,400	3100/G2	Orra View F1	L & E Fowlie, Guise Of Tough, Alford, Aberdeenshire

**W J Barker – KEER**

£14,000	1185/G1	Lunesdale R1	S Allan & Sons, Green How Farm, Dufton, Appleby, Cumbria
£1,200	1185/G4	Keer F40	R E C Simpson & Sons, Temperance Farm, Marske, North Yorkshire
£1,000	1185/G6	Smearsett F1	R Marrs, Manor Farm, Ireby, Wigton, Cumbria

**W C Porter & Son – RIDDINGS**

£1,200	752/G1	Riddings D41	S Hallam, Grange Head Farm, Egton Bridge, Whitby, North Yorkshire
£1,900	752/G2	Riddings D41	J Ions & Co, Garrett Lee, Morpeth, Northumberland



£1,000	752/G3	Riddings D41	K Raw, Cow Dub, Dent, Sedbergh, Cumbria
£2,800	752/G4	Riddings D41	J Ions & Co, Garrett Lee, Morpeth, Northumberland
£5,400	752/G6	Riddings E22	N White, Barf House, Marrick, Richmond, North Yorks
			M Barker Farms, Abbey Farm, Ellerton, Abbey, Richmond, North Yorkshire
£2,000	752/G8	Ilkley Moor E1	J W Rees & Son, Nantyrhendy, Llangurig, Powys
£2,200	752/G9	Ilkley Moor E1	G Marrs, Cathow Farm, Kinniside, Cleator, Carlisle
£1,500	752/G10	Riddings E22	J Dixon & Sons, Stainton Manor, Downholme, North Yorkshire
£1,600	752/G11	Midlock C3	C D & R F Kitching, Grisedale Farm, Threshfield, North Yorkshire
£2,200	752/G12	Midlock C3	D I Rock Farming, Knock O Ronald, Gargunnoch, Stirling
£2,000	752/G13	Midlock C3	J Herdman, Newtown, Edlingham, Alnwick, Northumberland
			W H Sharp & Son, Longcroft, Berwickshire
			M/s Hedley, Northumberland
£2,000	752/G15	Midlock C3	J Hopkinson, Fair Place Farm, Cowling, Keighley, West Yorkshire
£1,400	752/G16	Midlock C3	J A Ritson, Baggra Yeat, Uldale, Wigton, Cumbria
£1,200	752/G17	Midlock C3	V & R Edmondson, 1 Low Portinscale, Keswick
£3,200	752/G20	Riddings E22	S D Thompson, Cherry Tree Farm, Aysgarth, North Yorkshire
£1,000	4572/G1	Bull & Cave E1	R Loughridge, The Hill, 41 Friary Road, Armoys, Co Antrim

#### Kilnstown Farms Ltd – KILNSTOWN

£1,000	2951/G1	Kilnstown C2	G P Taylor & Sons, Swathburn, Great Asby, Appleby, Cumbria
£1,000	2951/G6	Kilnstown B11	P J Bolland, Dykelands Farm, Skipton, North Yorkshire

#### T A Collingwood & Sons – AMBLING

£1,100	3948/G1	Highberries E1	J Natrass, Shield Hill Top, Garrigill, Cumbria
£1,600	3948/G13	Shafthill E7	R Raine, Fogg Close, Kirkoswald, Near Penrith, Cumbria

#### M/s Lawson & Sons – HUNDITH

£2,000	292/G1	Ilkley Moor E1	G R Wharton & Sons, Keisley Farm, Murton, Appleby, Cumbria
£1,400	292/G2	Ilkley Moor E1	A & D Smith, Kelmere Hills Farm, Distington, Workington, Cumbria
£1,000	292/G3	Ilkley Moor E1	J W Dixon, Peacock Hill, Dent, Cumbria
£1,000	292/G10	Hundith E6	T G & F K Stobart, Croglin High Hall, Armathwaite, Carlisle, Cumbria
£1,200	292/G11	Smearsett C3	D T Dinsdale & Son, Low Gill Farm, Aysgarth, Leyburn, North Yorkshire
£1,000	292/G13	Smearsett C3	G Cartmel, Gate Gill, Threlkeld, Keswick, Cumbria
£1,000	292/G27	Asby Hall B1	P McCune, Farewell Grange, Aspatia, Wigton
£1,300	292/G37	Barley E11	M/s Folder, Wescoe Farm, Threlkeld, Keswick, Cumbria
£3,600	292/G41	Scarrowmanwick F3	A Lodge, Westside House, Malham Moor, Settle, North Yorkshire

#### K A Brown & Sons – ASBY HALL

£1,600	3463/G1	Asby Hall D10	W H & D Gass, Nunsleugh, Bewcastle, Carlisle, Cumbria
			J Wight & Sons, Midlock, Crawford, Biggar, Lanarkshire
£1,600	3463/G3	Midlock C3	A & T Dixon, Chirdon Farm, Tarsett, Northumberland
£5,500	3463/G4	Midlock C3	H Ridley, Wood Hall, Hesketh Newmarket, Wigton, Cumbria
£1,600	3463/G5	Asby Hall D10	W Lockhart & Son, Lagganpark, Moniaive, Thornhill, Dumfriesshire
£3,200	3463/G6	Midlock C3	G Rawsthorne, Scargill Farm, Nether Kellet, Carnforth, Lancs
£1,100	3463/G7	Midlock C3	T A Collingwood, Ambling Gate, Eastgate, Co Durham
£2,200	3463/G8	Midlock C3	J W & M E Taylor & Sons, High Laning, Dent, Sedburgh
			J W & J H Burton, Long Faw Farm, Gayle, Hawes
£1,000	3463/G9	Midlock C3	W & J & E Harker & Son, Raygill House Farm, Ramsgill, Harrogate
£1,800	3463/G11	Lunesdale Z18	Bank House Farms, Cowan Bridge, Carnforth, Lancs

#### D J Abberley – OLD HEMLEY

£2,000	2070/G3	Shafthill F8	B R Fawcett, New House Farm, Bishop Dale, North Yorks
--------	---------	--------------	---

#### J W Alderson – HOWGILL GRANGE

£1,100	1908/G2	Howgill Grange Z1	W Richardson & Son, Ghyll House, Dufton, Appleby, Cumbria
--------	---------	-------------------	---

#### C & D Hall – FIRTH

£3,000	1574/G6	Hewgill E1	A MacGregor Ltd, Allanfauld Farm, Kilsyth, Glasgow
			M & C Milne, Kennieshillock
£1,200	1574/G4	Hewgill E1	E McKeegan, 69 Glenane Road, Cushendall, Co Antrim, Northern Ireland
£2,000	1574/G41	Riddings F33	W Adams, 139 Cloughwater Road, Ballymena, Co Antrim
			R A Graham

#### P Ayrton – HAYSHAW

£1,400	2051/G2	Hayshaw E12	J H Sharp & Sons, Ivescar, Chapel Le Dale, Carnforth, Lancs
--------	---------	-------------	---

#### J Allison & Sons – SEALHOUSES

£1,000	1819/G1	Ilkley Moor E1	J H Pedley, Ellerbeck, Kirkby Lonsdale, Carnforth, Lancs
--------	---------	----------------	--

#### A & H Watson – MIDDLETON HALL

£1,500	2263/G1	Micklaw E1	W M Reed & Sons, Lands Farm, Westgate, Bishop Auckland, Co Durham
£1,500	2263/G5	Bull & Cave C2	J Sunter & Sons, Raydale Grange, Askrigg, Leyburn, North Yorkshire
£1,500	2263/G6	Bull & Cave C2	R S Harker & Son, Grayrigg Hall, Grayrigg, Kendal, Cumbria
£1,000	2263/G7	Bull & Cave C2	R A Busby & Son, Harland House, Marrick, Richmond, North Yorkshire



£1,100	2263/G9	Bull & Cave C2	W Richardson & Son, Ghyll House, Dufton, Appleby, Cumbria
£1,100	2263/G12	Micklaw E1	F A Caton, Weston Hall Farm, Weston, Otley, Yorkshire
<b>J W &amp; J Burton &amp; Son – LONG FAW</b>			
£1,400	3562/G4	Smearsett F12	J R & A Blades, Scarr House, Muker, Richmond, North Yorkshire
<b>A Caton – OTTERBURN LODGE</b>			
£1,800	3253/G1	Midlock X2	G & G Schofield, Heber Farm, Buckden, Skipton, North Yorks
£5,500	3253/G4	Middleton Hall D2	W & C W Dent, Greenriggs, Kirkby Stephen, Cumbria
			M/s Jenkinson, Whingill, Kirkby Stephen
£1,150	3253/G5	Middleton Hall D2	F A Caton, Weston Hall Farm, Weston, Otley, Yorkshire
£1,000	3253/G8	Otterburn Lodge F1	M/s Hodgson, Rydal, Ambleside, Cumbria
£1,000	3253/G9	Otterburn Lodge F1	Bank House Farms, The Estate Office, Cowan Bridge, Carnforth, Lancs
£1,150	3253/G12	Otterburn Lodge E2	J & I Whitaker, Bowsber Farm, Clapham, Lancs
£1,500	3253/G14	Otterburn Lodge F19	T W Atkinson & Son, Riverside Farm, Gammersgill, Leyburn, N Yorks
<b>W A Dinsdale &amp; Son – HARKERSIDE</b>			
£2,000	2475/G2	Harland E6	W & R Kerr & Son, Sauchrie Mains Farm, Maybole, Ayrshire
£1,100	2475/G4	Harland E6	S J Buckley & Partners, Sittinglow Farm, Buxton, Derbyshire
£1,000	2475/G11	Shafthill F7	J Bell, Whelphill, Crawford, Biggar
<b>D Alderson – LOWFIELD FARM</b>			
£1,000	3743/G1	Kirkby Redgate F11	T L B & J Knowles, High Borrowbridge, Selside, Kendal, Cumbria
£2,000	3743/G2	Marriforth E4	M/s Watson, West Newlands Farm, Frosterley, Bishop Auckland
£1,600	3743/G3	Marriforth E4	A Frame, The Home Farm, Glenbuck
<b>Breck House Enterprises Ltd – BRECK HOUSE</b>			
£1,600	2224/G1	Marriforth F3	R & J Myers, Toad Hole Farm, Bransdale, Fadmoor, Yorkshire
£1,100	2224/G4	Kirkby Redgate F8	J Dixon & Sons, Stainton Manor, Downholme, North Yorkshire
<b>P L Heard – YELLAND</b>			
£1,500	3980/G1	Cottage F20	D Birkett & Son, West Park, Cotherstone, Barnard Castle, Co Durham
£1,600	3980/G2	Cottage F20	J R & A Blades, Scarr House, Muker, Richmond, North Yorkshire
£1,100	3980/G3	Cottage F20	I & M Lancaster, Cold Cotes Farm, Pendleton Road, Nr Clitheroe
<b>I &amp; W Jones – UNDERWOOD</b>			
£1,000	1982/G13	Redburn F2	D E Thomas, Grofft, Caio, Llanwrda, Carms.
<b>M James – DUHONW</b>			
£6,000	1411/G1 (Champ.)	Old Hemley D7	J Herdman, Newtown, Edlingham, Alnwick, Northumberland
			W H Sharp & Son, Longcroft, Berwickshire
			M/s Hedley, Northumberland
£4,000	1411/G2	Low Tipalt F4	E G Bulman, Mile House Vet Centre, Darlington Road, Northallerton
			N Peacock, Dower House, Mawby, Thirsk, North Yorkshire
£1,000	1411/G3	Duhonw F1	Matson Farm, Matson Ground, Windermere
<b>J Wight &amp; Sons – MIDLOCK</b>			
£8,000	1538/G1	Hewgill E1	Crow Hall Farms Ltd, Bardon Mill, Hexham, Northumberland
			J E & S J L James, Neuadd-Blaenduhonw, Maesmynis, Builth Wells
			J Snaith, Clennell Hall, Alwinton, Rothbury, Northumberland
			M W & C M Ridley, Shitlington Hall, Wark, Hexham, Northumberland
£2,500	1538/G2	Hewgill E1	D M Jarvie, Cherryfield, Muthill, Perthshire
£9,000	1538/G4	Hewgill E1	Crow Hall Farms Ltd, Bardon Mill, Hexham, Northumberland
			J E & S J L James, Neuadd-Blaenduhonw, Maesmynis, Builth Wells
			J Snaith, Clennell Hall, Alwinton, Rothbury, Northumberland
			M W & C M Ridley, Shitlington Hall, Wark, Hexham, Northumberland
£15,000	1538/G33	Midlock F27	A Campbell, Drimsynie, Lochgoilhead, Argyll
			J Pirie, Blarnavaid Farm, Drymen, Glasgow
£10,000	1538/G34	Midlock F27	R D Archer & Son, Carry House, Wark, Hexham, Northumberland
			J Hunter & Sons, The Steel Farm, Bellingham, Hexham
£11,000	1538/G35	Midlock F27	R & P E Hargreaves & Son, Meadow Bank, Near Burnley, Lancs
			J Nelson & Son, Bull & Cave, Clapham, Lancaster, Lancs
			R S & B A Harker, Overthwaite, Holme, Carnforth, Lancs
£8,000	1538/G36	Midlock F27	J P Lee, Morley Hill, Whitfield, Hexham, Northumberland
			T Carrick, Cross Gill, Garrigill, Alston
£6,000	1538/G37	Midlock F27	C & D Hall, Lilyburn Farm, Penicuik, Midlothian
			T Dick & Son, Hamildean, Peebles
			W H & D Gass, Nunsleugh, Bewcastle, Carlisle, Cumbria
£1,600	1538/G5	Hewgill E1	P G Mullen, 10A Corlacky Hill, Swatragh
£4,000	1538/G6	Hewgill E1	J W Smith-Jackson, High Town, Melkridge, Haltwistle, Northumberland
			W A Dinsdale & Son, Harkerside Place, Richmond, North Yorkshire
£3,000	1538/G55	Bull & Cave E1	A L Dean & Son, Toft House Farm, Threshfield, North Yorkshire
£2,100	1538/G54	Bull & Cave E1	F A Caton, Weston Hall Farm, Weston, Otley, Yorkshire



**M/s Lord – HEWGILL**

£6,000	980/G1	Hewgill E47	W M Hutchinson & Sons, Redgate, Kaber, Kirkby Stephen, Cumbria
£10,000	980/G2	Hewgill E47	J Ireland & Sons, Stockhow Hall, Kirkland, Frizington, Cumbria
			A G & K F Nicholson, Swinside End Farm, Scales, Cockermouth
£8,500	980/G3	Hewgill E47	F Fairburn & Sons, Marriforth, Thornton Steward, Ripon, North Yorkshire
£5,000	980/G4	Hundith B4	P L Heard, Yelland Farm, Okehampton, Devon
£4,200	980/G5	Hewgill E47	W C Porter & Son, Riddings Farm, Reeth, Richmond, North Yorkshire
£3,100	980/G6	Hewgill E47	E J & A M Fox, Elsdonburn, Kirknewton, Northumberland
£1,800	980/G7	Hundith B4	C R & H M Atkinson, High Howe, Askham, Penrith, Cumbria
£1,400	980/G8	Hundith B4	S A Fawcett, Fold House Farm, Barden, Skipton, North Yorkshire
£3,200	980/G10	Hewgill E47	M/s Folder, Wescoe Farm, Threlkeld, Keswick, Cumbria
£2,000	980/G13	Hewgill B41	G & H R Shields, Tarn House, Ravenstonedale, Kirkby Stephen, Cumbria
£3,400	980/G14	Hewgill B41	D J Abberley, Cwmlliw Farm, Trallong, Brecon, Powys
£1,200	980/G15	Hewgill B41	K Adams, Rudland Farm, Fadmoor York

**C T & J E Willoughby & Sons – PENHILL**

£3,400	2904/G5	Midlock E29	R & R Gornall, Croft House, Dent, Sedbergh, Cumbria
£1,000	2904/G7	Midlock E29	J Campbell & Son, Claylands, Kippen, Stirling

**W & D Lawson & Son – GRAGARETH**

£2,600	2726/G2	Marriforth E40	F A & A Waugh, Kilnstown Farms Ltd, Bewcastle, Carlisle, Cumbria
£1,600	2726/G3	Riddings F11	R Raine, Fogg Close, Kirkoswald, Near Penrith, Cumbria

**W M Hutchinson & Sons – KIRKBY REDGATE**

£7,500	640/G2	Hewgill E28	M/s Park & Mills, Auchens, Mennock, Sanquhar, Dumfries
--------	--------	-------------	--

**Ellis Brothers – ILKLEY MOOR**

£1,600	2041/G1	Bull & Cave D1	W M & C Wallace, Gapshield, Brampton, Cumbria
£1,000	2041/G4	Bull & Cave D1	J Huddleston, Ravenscar Farm, Brookhouse, Lancaster, Lancs
£1,750	2041/G8	Ilkley Moor E36	J & G Huck, Church Farm, Hubberholme, Skipton, North Yorkshire

**J H Pedley – BARWICK**

£1,800	992/G1	Breck House E2	W J & L A Barker, Brown Edge Farm, Arkholme, Carnforth, Lancs
			T Ayrton & Son, Yates Farm, Over Wyresdale, Lancaster, Lancs

**M R Thornborrow – DAWYCK**

£2,100	4346/G1	Penhill F10	R & A R Hunter, Hogra Farm, Redmire, Leyburn, North Yorkshire
£1,000	4346/G2	Penhill F10	E McKeegan, 69 Glenane Road, Cushendall, Co Antrim, Northern Ireland

**D I L & E Jones – LLANILLTYD**

£1,100	1737/G1	Low Tipalt F4	W S Hudson, Issac Walton Farm, Nr Ashbourne, Derbyshire
--------	---------	---------------	---

**Welshpool – 02/10/2014 - Ram Lamb****S A & R P Jones – CRAIG YR ORSEDD**

£1,365	3363/G7	Arkleby B1 E+	R W & J L Edwards, Tyntwll, Llanarmon D C, Llangollen
--------	---------	---------------	---

**Penrith – 09/10/2014 - Shearlings****M/s Lord – HEWGILL**

£7,000	980/F51	Hewgill B41	J Ireland & Sons, Stock Howe Hall, Kirkland, Frizington, Cumbria
£3,800	980/F42	Hewgill B41	A G & K F Nicholson, Swinside End Farm, Scales, Cockermouth
£2,800	980/F34 (Champ.)	Hundith B4	H & M R Iverson, Hole House, Ousby, Penrith, Cumbria
			M W Bousfield, Hegdale, Bampton, Penrith, Cumbria

**Ram Lambs****M/s Lord – HEWGILL**

£4,200	980/G17	Hewgill E47	Messrs Lewis, Waterside House, Pooley Bridge, Penrith, Cumbria
£4,300	980/G18	Hewgill E47	Messrs Lewis, Waterside House, Pooley Bridge, Penrith, Cumbria

**W M Hutchinson & Sons – KIRKBY REDGATE**

£1,000	640/G24	Hewgill E28	Messrs Kitching, Dale Bottom, Keswick, Cumbria
--------	---------	-------------	--

**Carlisle – 10/10/2014 - Aged Rams & Shearlings****W M & C Wallace – GAPSHIELD**

£1,000	2577/F5	Gragareth D4	G H & A Walton & Sons, Farnbury, Alston, Cumbria
--------	---------	--------------	--

**Kilnstown Farms Ltd – KILNSTOWN**

£2,800	2951/F10	Keer B15	W I Foster, Coombe Crag, Banks, Brampton, Cumbria
£2,200	2951/F3	Kilnstown C2	W J Scott, Low Leam, West Woodburn, Hexham, Northumberland
£2,000	2951/F5	Kilnstown C2	R J Shennan, Farden Farm, Girvan, Ayrshire



<b>J Carr &amp; Co - HOMILTON</b>			
£1,500	620/F15	Snab Green D1	R J Shennan, Farden Farm, Girvan, Ayrshire
<b>J T &amp; J James - TODHILLS</b>			
£2,800	2747/F11	Todhills C17	H M & R A Ivanson & Sons, Hole House, Ousby, Penrith, Cumbria
<b>J &amp; A Gray - SCROGTON</b>			
£1,200	1176/F1	Midlock D27	Murdo Maclean, Wester Croachy, Aberarder, Invernessshire
<b>J Lee - MORLEY</b>			
£1,000	309/F10	Keer C15	J G Richardson, Low Garth, Bewaldeth, Cockermouth, Cumbria
<b>D Sandilands - WHINFIELD</b>			
£2,000	2814/E2	Ashes D4	S J Charlton, The Shield, Kirkwhelpington, Newcastle Upon Tyne
<b>W H &amp; D A Gass - NUNSCLEUGH</b>			
£2,000	408/F10	Tanhouse Farm B4	Hodgson Bros, Rydale Farm, Ambleside, Cumbria
£1,800	408/F12	Nunsleugh D26	W I Foster, Coombe Crag, Banks, Brampton, Cumbria
£1,600	408/F7	Nunsleugh C13	J G Richardson, Low Garth, Bewaldeth, Cockermouth, Cumbria
<b>J R F Pattinson - HOTT BANK</b>			
£1,800	1877/F7	Nunsleugh D23	R English & Son, Brown Leazes Farm, Wark, Hexham
			C H & S Peart, Hareshaw Farm, Bellingham, Hexham
£1,150	1877/F5	Nunsleugh D23	J C Thornton & Son, Dyke Croft, Ravenglass, Cumbria
<b>T P Wigham - HARGILL HOUSE</b>			
£2,000	1265/F6	Hewgill C24	M & A Donald, Denton Mains, Low Row, Brampton, Cumbria
£1,600	1265/F10	Hewgill C24	W M & C Wallace, Gapshields, Brampton, Cumbria
£1,000	1265/F9	Hewgill C24	D & M Scott, Redesmouth Farm, Bellingham, Hexham
<b>Ram Lambs</b>			
<b>D W Henderson - BURNDALE</b>			
£2,000	65/G1	Bonvilston C1	R A McClymont, Kirkstead, Selkirk, Selkirkshire
<b>T A Collingwood &amp; Sons - AMBLING</b>			
£1,400	3948/D11	Ambling D1	D A & F M Dalton, Burtreeford, Cowshill, Bishop Auckland, County Durham
<b>W C Porter &amp; Son - RIDDINGS</b>			
£1,200	752/G21	Riddings E22	T Trafford, Peter House Farm, Bassenthwaite, Keswick, Cumbria
<b>Crow Hall Farms - CROW HALL</b>			
£4,000	4404/G4	Firth C13	J R F Pattinson, Hott Bank, Bardon Mill Hexham
			R S Mackay, Westhills, Rothbury, Morpeth
£1,200	4404/G5	Firth C13	A Jolly, Clyne Farm, Newmacher, Aberdeen, Aberdeenshire
<b>W M &amp; C Wallace - GAPSHIELD</b>			
£1,200	2577/G2	Gapshield E2	J W Porter & Sons, Low Oxnop Farm, Gunnerside, Richmond
<b>Messrs W Ridley - BLEAGILL</b>			
£2,500	3997/G7	Bleagill C1	Messrs Swallow, High Edges Green, Cawburn, Haltwhistle
			R & M J Lee, Harwood Shields, Steel, Hexham
£1,200	3997/G4	Bleagill E1	W H Raine, Ravenwood Cottage, Renwick, Penrith, Cumbria
<b>J Thomas &amp; Son, TANHOUSE FARM</b>			
£2,200	3320/G12	Tanhouse Farm D1	H G & D J Dixon, Alwinton Farm, Alwinton, Morpeth, Northumberland
<b>I Potts - REDBURN</b>			
£1,000	2417/G1	Ambling D1	J T James, Midtodhills, Roadhead, Carlisle, Cumbria
£1,000	2417/G3	Ambling D1	R Rutherford & Sons, Kingswood Farm, Whitfield, Hexham, Northumberland
<b>P M &amp; P Smith - THE DYKE</b>			
£1,500	3933/G2	The Dyke E7	P Robson, Taylor Burn, Ninebanks, Hexham, Northumberland
£1,200	3933/G1	The Dyke E7	G A & D E Thompson, How Burn, Garrigill, Alston, Cumbria
£1,000	3933/G6	The Dyke F6	J A & C M Dalton, Glenhill, Allendale, Hexham, Northumberland
<b>S A &amp; R P Jones - CRAIG YR ORSEDD</b>			
£1,000	3363/G11 (ET)	Craig Yr Orsedd E25	W & C Wilson, Dalmore Farm, Alness
<b>D J Abberley - OLD HEMLEY</b>			
£1,100	2070/G20	Tanhouse Farm C2	A B Loudon, Quinloch Farm, Blanefield, Glasgow
<b>P L &amp; J Dawson - KENTMERE HALL</b>			
£1,600	1552/G6	Kentmere Hall F1	W A & G R Sedgley, Low Bank House, Barbon, Carnforth, Lancashire
£1,300	1552/G19	Low Tipalt D4	S & W Maughan, Street House, Ainstable, Carlisle, Cumbria
<b>H &amp; S Hamilton - CAIRN SMIDDY</b>			
£1,350	2637/G1	Duhonw E17	R H S Turner, Homeleigh, Payhembury, Honiton, Devon
<b>J T &amp; J James - TODHILLS</b>			
£2,000	2747/G7	Todhills Z6	J T James, Midtodhills, Roadhead, Carlisle, Cumbria
			I Potts, Redburn Farm, Rookhope, Bishop Auckland - Co Durham
£1,000	2747/G1	Kirkby Redgate F1	J Rutter-Armsrong, Far Town Farm, Alston, Cumbria
£1,000	2747/G2	Kirkby Redgate F1	D & H M Watson, Middleton Hall, Middleton, Carnforth, Lancashire



**F Johnson - ASHES**

£1,500	234/G1	Bonvilston C1	B Nicholls, Lower East Middleton, Parracombe, Barnstaple, Devon
--------	--------	---------------	---

**R Neill - ROSSIEBANK**

£2,000	840/G5	Mendick D14	M Quinn, Whinnyhall Farm, Kinglassie, Lochgelly, Fife
£1,600	840/G3	Rossiebank E11	S E Hill, Little Cross, Arkleby, Wigton, Cumbria
£1,400	840/G1	Rossiebank E11	A H Smith, Low Arkland Farm, Kelton, Castle Douglas, Kirkcudbrightshire

**H Fisher - GALA BANK**

£1,050	4484/G4	Skeughdale F2	B Davies, South Hill Farm, Wiston, Haverfordwest
--------	---------	---------------	--

**Messrs Hewson - PARTON**

£2,200	233/G24	Davy Shields C4	T H Vickers & Sons, Thornley Hall, Tow Law, Bishop Auckland
--------	---------	-----------------	---

**A Campbell - DRIMSYNIE**

£1,300	4307/G12	Hewgill E4	S P Walton, Wanwood Hill, Alston, Cumbria
--------	----------	------------	---

**R Murdock - WATCH HILL**

£2,800	4439/G1	Ashes D4	G P Williams & Co, Bryndansi, Dolwen, Abergele, Clwyd
--------	---------	----------	---

**E Fairburn & Sons - MARRIFORTH**

£1,800	746/G17 (ET)	Midlock D41	W A Dinsdale, Harkerside Place Farm, Harkerside, Reeth, Richmond W M Hutchinson & Son, Redgate, Rookby, Kirkby Stephen, Cumbria
--------	--------------	-------------	--

**J Lee - MORLEY**

£1,300	309/G2	Bull & Cave D7	C W & Y Dixon & Sons, Haresceugh Castle, Renwick, Penrith, Cumbria
--------	--------	----------------	--

**J & W Bell - COTTAGE**

£2,200	3331/G18	Hewgill E4	J Carr, Camphill Farm, Barrasford, Hexham, Northumberland
£1,400	3331/G13 (ET)	Shafthill C1	T Davidson, Bellmount, Laversdale, Irthington, Cumbria R & W D Charlton, Whiteside Farm, Haltwhistle, Northumberland

**R Bell - SCARROWMANWICK**

£1,300	14/G9	Scarrowmanwick E11	A J Mason, Odd Acres Farm, Embsay, Skipton, North Yorkshire
--------	-------	--------------------	---

**G Roberts - MYFYRIAN X**

£2,200	4390/G5	Riddings E7	R P Lamb, Ludworth Moor Farm, Gun Road, Mellor, Stockport, Cheshire
--------	---------	-------------	---

**W M Hutchinson & Sons - KIRKBY STEPHEN**

£2,600	640/G17	Hewgill E28	J Stobart, Howbeck Lodge, Kesket Newmarket, Wigton, Cumbria
£1,600	640/G18	Hewgill D17	G R & M K Bell, Borthwickbrae, Burnfoot, Hawick, Roxburghshire

**T Davidson - DAVY SHIELDS**

£1,000	1389/G5	Davy Shields D1	R Wilson, Carrholme, Armathwaite, Carlisle, Cumbria
--------	---------	-----------------	---

**M R Thornborrow, DAWYCK**

£1,400	4346/G13	Midlock D2	J Browell & Sons, Quarry House Farm, Throckrington, Hexham
--------	----------	------------	--

**A J Steedman - DUNBRACH**

£3,500	1630/G1	Firth D2	S Hamilton, Tower Farm, Sanquhar, Dumfriesshire
£1,100	1630/G3	Firth D2	J Carr, Camphill Farm, Barrasford, Hexham, Northumberland

**A Caton - OTTERBURN LODGE**

£3,800	3253/G15	Middleton Hall D2	T A Collingwood & Sons, Ambling Gate, Eastgate, Bishop Auckland
--------	----------	-------------------	---

**W H & D A Gass - NUNSCLEUGH**

£7,000	408/G21	Tanhouse Farm B4	A Minto & Son, Townhead Farm, Dolphington, West Linton T Dick & Sons, Hamildean, Peebles M Thornborrow, Easter Dawyck, Stobo, Peebles N Raeburn (Kilburn), Addotsneuk, March Street, Peebles
£1,050	408/G24	Tanhouse Farm B4	W Wearmouth & Son, Rose Hill, Eastgate, Bishop Auckland, Co Durham

**T P Wigham - HARGILL HOUSE**

£1,400	1265/G1	Hewgill C24	T W Wigham & Sons, Cold Shields, Coanwood, Haltwhistle, Northumberland
--------	---------	-------------	--

**Messrs Lawson & Sons - HUNDITH**

£1,600	292/G15	Smeasett C3	J Browell & Sons, Quarry House Farm, Thockrington, Hexham
£1,500	292/G8	Hundith E6	W & D Lawson & Son, Parr Bank Farm, Masongill, Ingleton, Carnforth
£1,000	292/G4	Ilkley Moor E1	R H & E M Lord, The Bog, Slaggyford, Brampton, Cumbria
£1,000	292/G5	Ilkley Moor E1	N Graham, Tortolgate, Haile, Egremont, Cumbria
£1,000	292/G28	Asby Hall B1	M W Skidmore & Sons, North Hanging Wells, Eastgate, Bishop Auckland

**M W & C M Ridley - SHITLINGTON**

£1,000	2857/G3	Old Hemley D7	T J Lee & Son, Hackford, Steel, Hexham, Northumberland
--------	---------	---------------	--

**D I L & E Jones - LLANILLTYD**

£2,200	1737/G2	Low Tipalt F4	J Bell, Whelphill Farm, Crawford, Biggar, Lanarkshire
--------	---------	---------------	---

**J W Smith-Jackson - SHAFTHILL**

£7,000	1080/G1	Shafthill C2	G W Lee & Sons, Stockley Burn Farm, Frosterley, Co Durham N Marston, Millstone Moor, Redmain, Cockermouth, Cumbria
£1,000	1080/G3	Midlock E28	K D Harryman, Keskadale Farm, Newlands, Keswick, Cumbria

**J E G Shand & A R Carter - STREET**

£6,500	2814/G2	Rossiebank Z1	Mosser Mains Farm, Mosser Mains, Mosser, Cockermouth M C Roberts, Myfyrian Isaf, Gaerwen, Gwynedd
£1,600	2814/G4	Ashes D4	W & C Ingram, Logie Durno Farm, Pitcaple, Inverurie

**I & W Jones - UNDERWOOD**

£1,050	1982/G2	Sealhouses E21	T Davies & Co, Llwyncadwgn, Beulah, Llanwrtyd Wells, Powys
--------	---------	----------------	--

**I Craig - HANGING WELLS**

£4,500	4438/G21	Penhill F5	G & A J Rawsthorne, Scargill Farm, Nether Kellett, Carnforth, Lancashire
£2,200	4438/G14	Midlock E28	R & M J Lee, Harwood Shields, Steel, Hexham, Northumberland

**T J Hall & Son - DEADWATER**

£1,000	4185/G1	Ty-Gwyn A1	W & P F Walton, Penpugh, Bardon Mill, Hexham, Northumberland
--------	---------	------------	--

**J Wight & Sons - MIDLOCK**

£8,000	1538/G56	Bull & Cave E1	R Hargreaves, Meadow Bank, Barley, Burnley, West Yorkshire
£6,000	1538/G14	Hewgill E1	D McCrystal, 92 Gulladuff Hill, Drummuck, Maghera
£4,500	1538/G39	Hewgill E1	H W Montgomerie, Assloss Farm, Dean Estate, Kilmarnock, Ayrshire
£3,000	1538/G9	Hewgill C2	D J Abberley, Cwmlliw, Trallong, Brecon, Powys
£2,000	1538/G8	Hewgill E1	Messrs Lord, Low Dowgill, North Stainmore, Kirkby Stephen, Cumbria
£1,600	1538/G41	Midlock F27	L Raine & Sons, Coach & Horses, Spital Bowes, Barnard Castle
£1,500	1538/G10	Hewgill E1	J & S E Bainbridge, Dousgill Farm, Barningham, Richmond, North Yorkshire

**Messrs Lord - HEWGILL**

£2,000	980/G23	Hewgill E47	W & P F Walton, Penpugh, Bardon Mill, Hexham, Northumberland
£1,800	980/G24	Hewgill E47	H M & R A Ivanson & Sons, Hole House, Ousby, Penrith, Cumbria
£1,600	980/G25	Hewgill E47	T & M E Jackson, Hill Top Farm, Grewelthorpe, Ripon, N Yorkshire

**J Browell & Sons - QUARRY HOUSE**

£2,000	1653/G1 Champ.	Ty-Gwyn D5	W L Patterson & Sons, Broomhope Farm, Bellingham, Hexham
£1,000	1653/G2	Ty-Gwyn D5	P C Charleton, Harle, Newhouses, Kirkwhelpington, Northumberland
£1,000	1653/G3	Ty-Gwyn D5	P C Charleton, Harle, Newhouses, Kirkwhelpington, Northumberland
£1,000	1653/G9	Midlock E10	W & B Nichol, Lawston Farm, Newcastleton, Roxburghshire
£1,000	1653/G10	Midlock E10	K Hall, Baggarah Farm, Low Row, Brampton, Cumbria
£1,000	1653/G5	Midlock E10	D & M Millar, Eycott Farm, Berrier, Penrith, Cumbria

**J Park - FOREBRAE**

£3,400	3749/G2	Parkgatestone D1	Robert McInnes, Graystoneknowe, Grassyards Road, Kilmarnock
--------	---------	------------------	---

## Armoy – 11/10/2014 - Shearling

**R Loughridge, ORRAVALE**

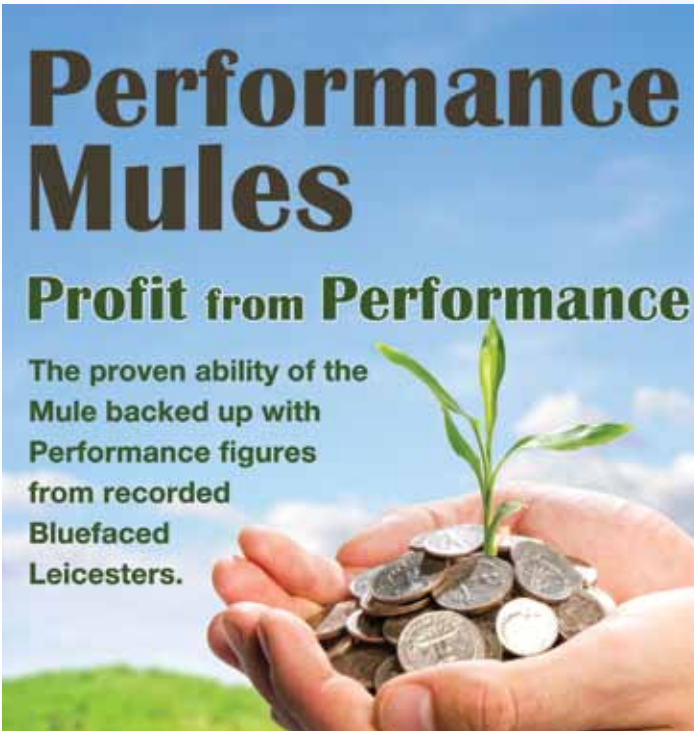
£588	1691/F23 (Champ.)	Firth D1	O'Kane Bros, Carnlough, Ballymena
------	-------------------	----------	-----------------------------------

## Association Trophy Winners 2014

**J R Bell & Son - Awarded to the highest priced lamb outside the top three prize winners at the sales at Hexham, Penrith and Carlisle - J Wight & Sons**

**Greenop Trophy - Awarded to the vendor of six lambs or more sold to the highest average through Association sales - J Wight & Sons**

**Helme Trophy - Sire Of The Year Awarded to the vendor of three ram lambs by the same sire sold to the highest average through the Association sale - J Wight & Sons**



**Performance Mules**

**Profit from Performance**

The proven ability of the Mule backed up with Performance figures from recorded Bluefaced Leicesters.



# DRIMSYNIE

Andrew Campbell 07747 122259



Wishing our  
customers all the  
very best with  
their purchases

Semen for sale  
from Batman  
and E4 Hewgill

G33 Midlock Knight Rider - £15,000

MacGregor



Crossing Leicesters Flock 3425 - Neil Marston 07974 919505

## Highberries

Thank all customers old and new for  
purchasing their stock.

Neil and Sally welcome everyone to NSA  
Northsheep being held at their  
home in 2015.

Penrith '14' - Champ. & Res. - both bred at Millstone  
Moor



Cockermouth '14 - Champion pen - sired by 6 tups  
(mainly homebred)



Midlock G31 - Top priced  
ram purchased at G.B. '14



Highberries G1  
sold to M Archer,  
Carry House  
(private sale)  
with a  
half share retained.

Wayne Hutchinson

Images by W. Hutchinson and J. Eveson